



**GLOBEX**  
Mining Enterprises Inc.



# A Mineral Property Bank

*Exploration – Diversification – Mining – Royalties*

---

TSX: **GMX** – OTCQX: **GLBXF** – FSE: **G1MN**

January 2024

Except for historical information, this presentation may contain certain “forward-looking statements”. These statements may involve a number of known and unknown risks and uncertainties and other factors that may cause the actual results, level of activity and performance to be materially different from the expectations and projections of Globex.

No assurance can be given that any events anticipated by the forward-looking information will transpire or occur, or if any of them do so, what benefits Globex will derive from them.

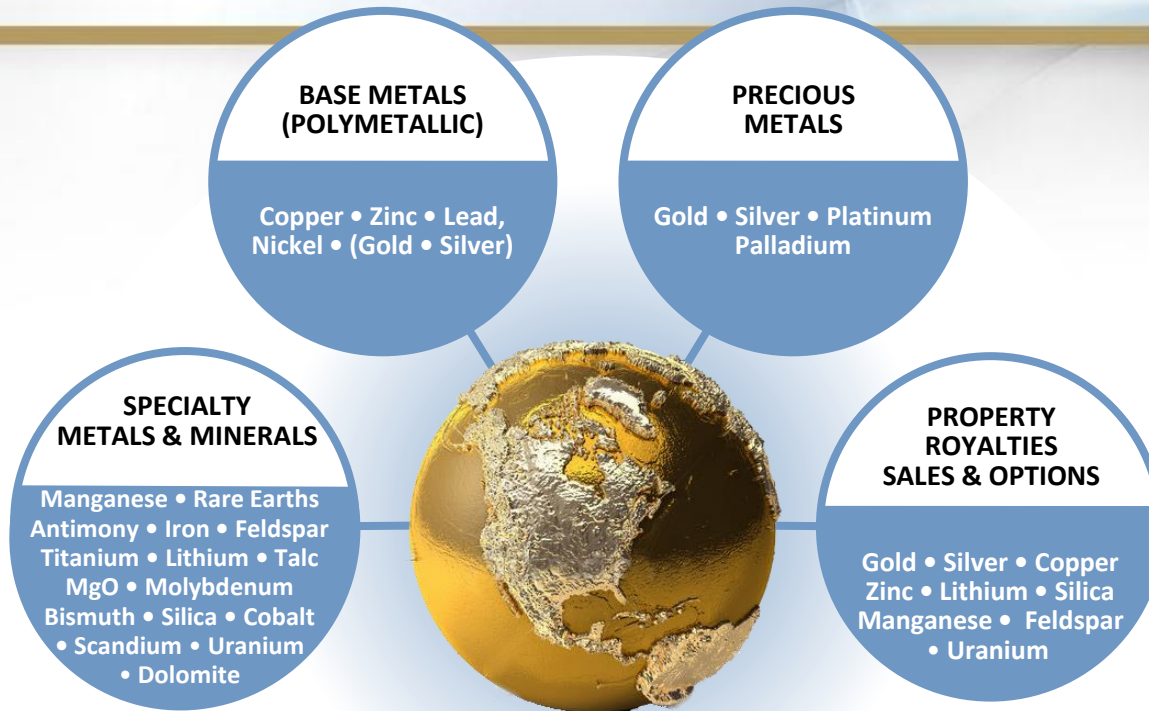
A detailed discussion of the risk factors relating to Globex is available in Globex’s Annual Information Form, available at [www.sedar.com](http://www.sedar.com) and at the Corporation’s web site at [www.globexmining.com](http://www.globexmining.com) .

References to reserves or resources if NI 43-101 or JORC conformable will be indicated as such. If not so indicated, they are historical and have not been verified by Globex’s professional staff and should not be relied upon.

**F**OCUS

ON THE

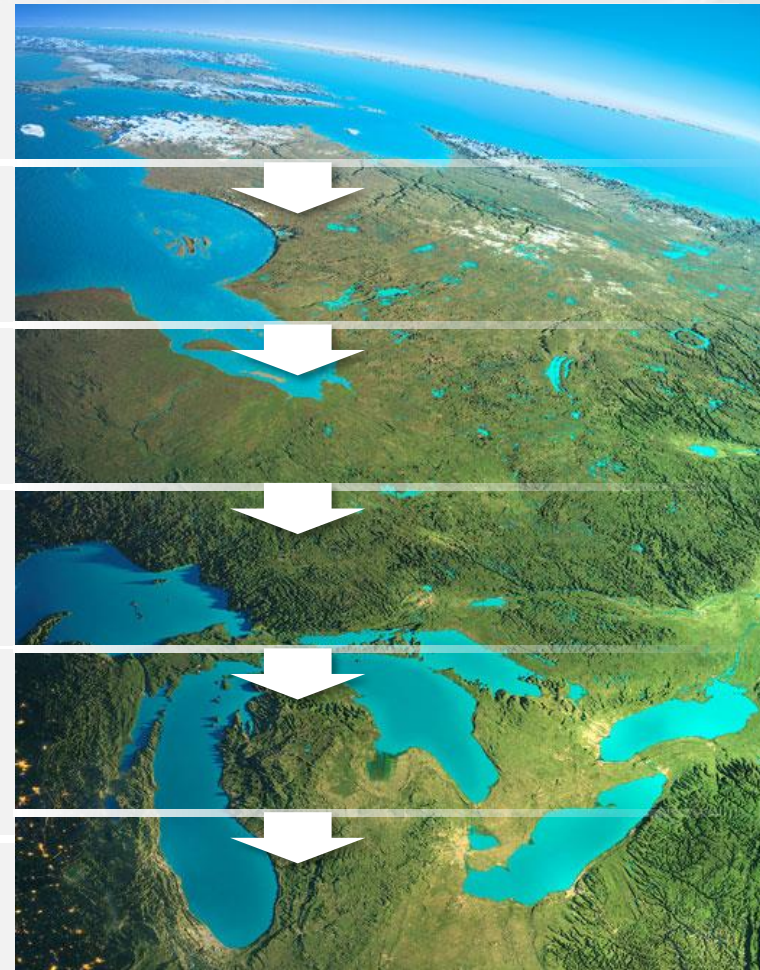
**V**ALUE



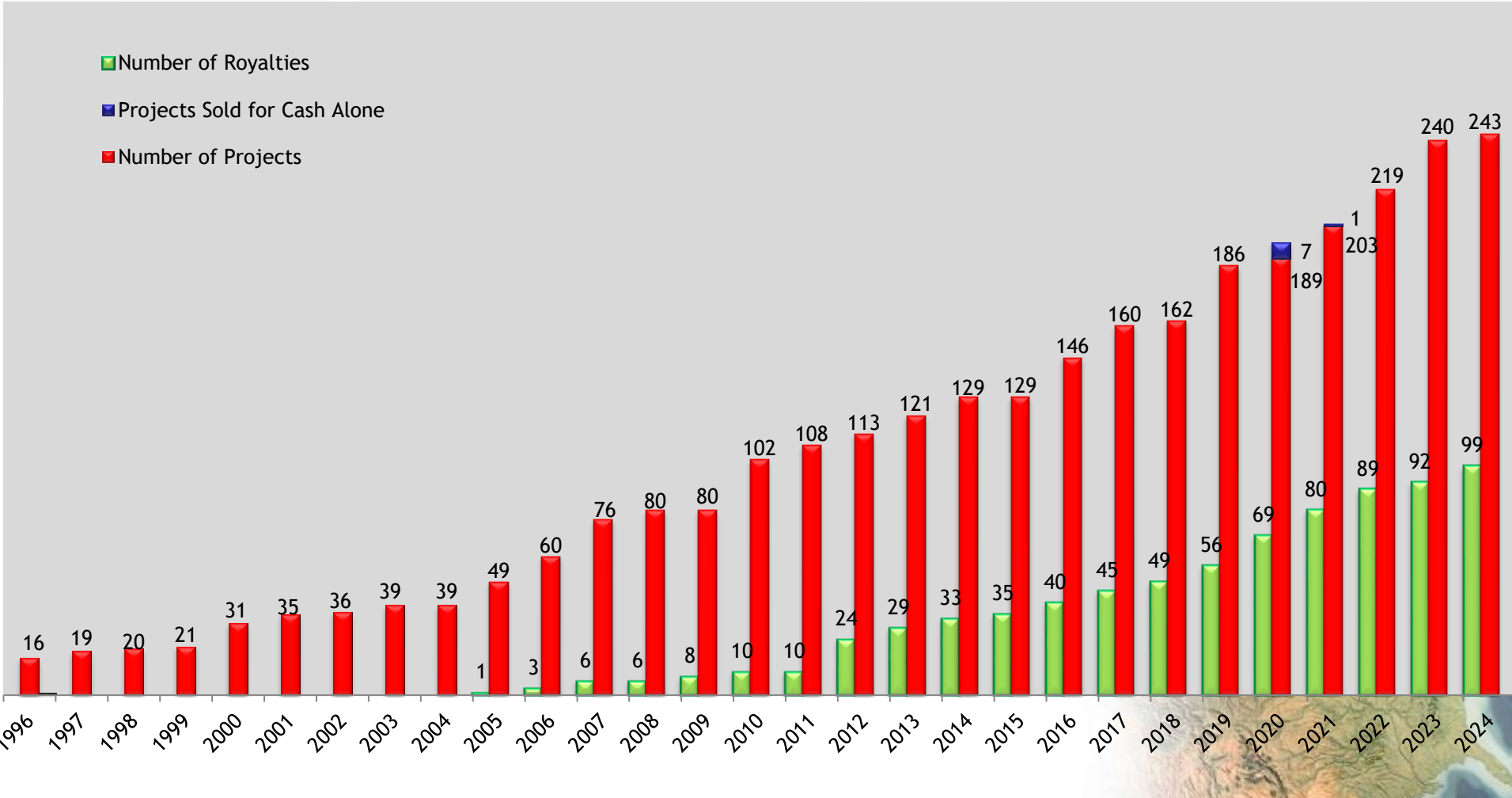
- ▶ Diversified
- ▶ Low political risk – focused in Eastern Canada, Germany and the U.S.A.
- ▶ Options, Sales, Joint Ventures and Royalties
- ▶ +\$25,000,000 cash and shares and marketable securities, no debt



- Mineral Property Bank/Incubator
- Specializing in acquisitions
- Asset upgrading through exploration and intellectual input
- Revenue through Options, Sales and Royalties
- Income = less share dilution, increased exploration expenditure, less shareholder risk, avoiding debt
- Increased property portfolio value



# Total Number of Project & Royalty Acquisitions By Year





## GLOBEX – THE BASICS

### History of Minimal Share Dilution

- # Shares Issued (no rollbacks) 55,302,836
- Shares, Fully Diluted 58,122,836
- 12.42% owned by Management
- Professional board and management
  - 3 senior geologists, 1 mining accountant and 1 senior finance professional)
- Listings

**GMX** (Canada) **Toronto Stock Exchange**

**G1MN** (Germany) **Frankfurt Stock Exchange**  
 (Frankfurt, Stuttgart, Berlin, Munich, Tradegate, Lang & Schwarz, LS Exchange, TTMzero, Düsseldorf, Quotrix Düsseldorf)

**GLBXF** (USA) **OTCQX International**

# Management and Directors

- Jack Stoch      President and CEO - + 40 years of experience  
P.Geo, Accredited Director
- Ian Atkinson      Director - + 40 years of experience  
P.Geo, M.Sc., A.K.C., D.I.C.  
Currently Director Kinross, until 2015 President Centerra Gold  
Former senior positions: Hecla, Battle Mountain Gold, Hemlo Gold Mines,  
Noranda Group
- Johannes  
H.C. Van Hoff      Director – International Financial Professional, Chairman NS Gold Corp.  
Former senior positions – Chairman & Senior Executive Officer Soros Funds  
Ltd., PVF Pension Funds, Paribas Capital Markets, Bankers Trust. Roles  
included: Manager, Senior Risk Manager, Deputy Head of Global Equity  
Derivations, Managing Director, M&A Arbitrage, Derivatives Arbitrage and  
Capital Investments.
- Dianne Stoch      Director - Accredited Director  
Retired. Served +30 years as Globex CFO and Corporate Secretary.  
Previously Senior Analyst, Revenue Planner - Noranda Mines for 18+ years
- Chris Bryan      Director – Retired Geologist and Mining Analyst  
Previously VP, Director and Portfolio Manager Bolton Tremblay  
Mining Analyst /Portfolio Manager Caisse Depot Placement Quebec





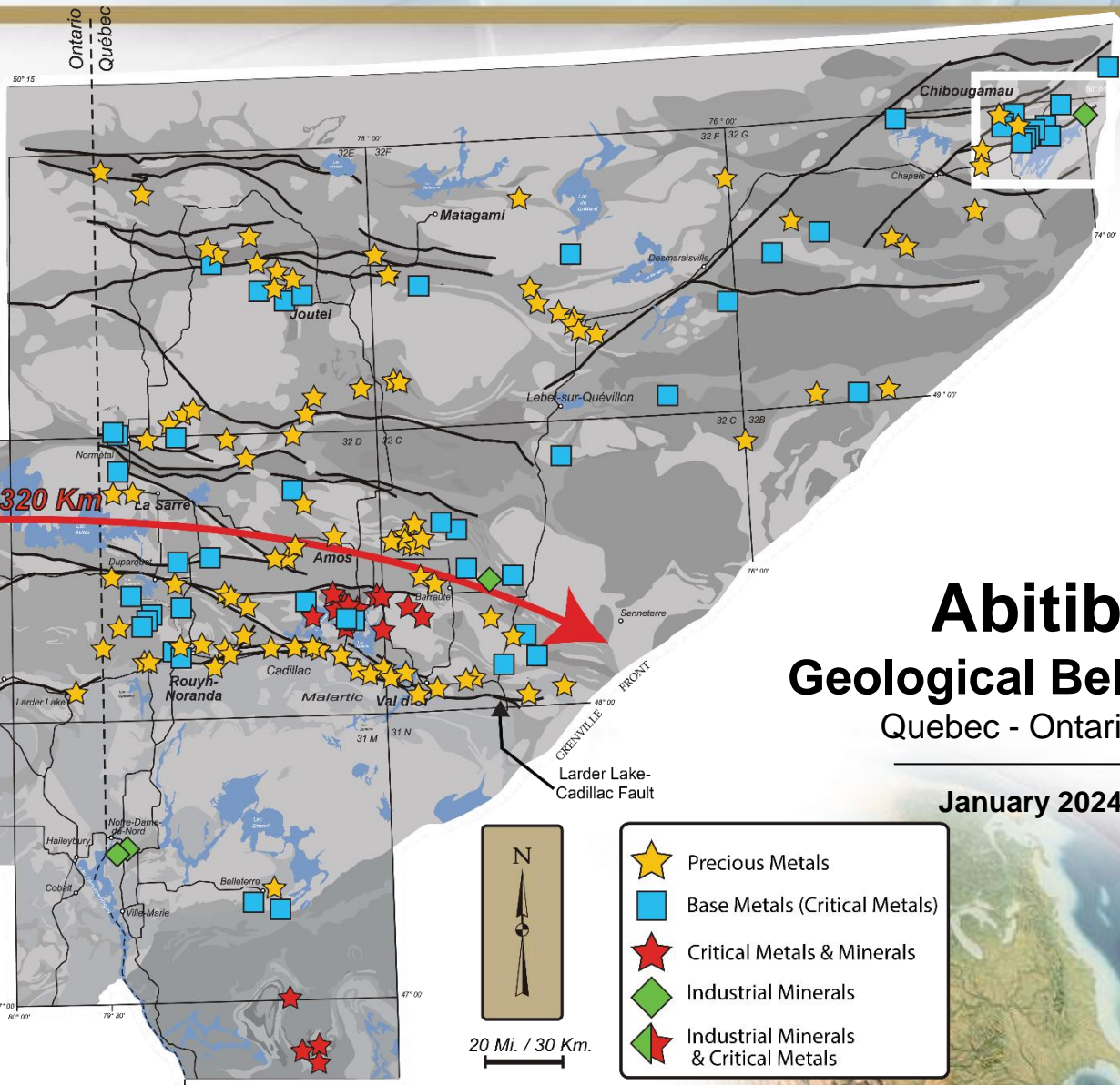
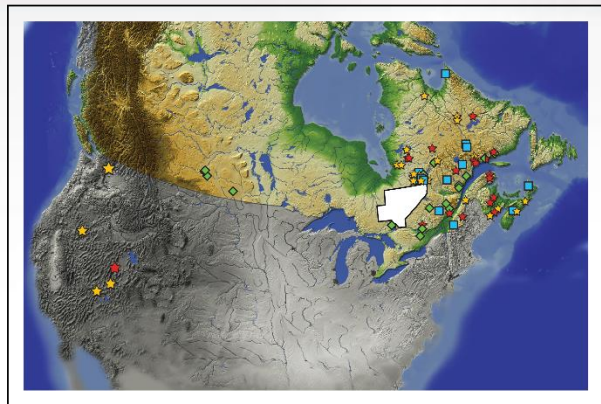
Numerous Owned Properties and Royalties

Assets include over 40 Former Mines

243	Projects
124	Precious Metals <ul style="list-style-type: none"> <li>• Gold, Silver, Platinum, Palladium</li> </ul>
65	Base Metals & Polymetallic <ul style="list-style-type: none"> <li>• Copper, Zinc, Lead, Nickel (Gold, Silver)</li> </ul>
54	Specialty Metals & Minerals <ul style="list-style-type: none"> <li>• Talc, Iron, Lithium, Beryl, Magnesium Oxide, Manganese, Mica, Molybdenum, Rare Earths, Titanium, Silica, Bismuth, Pyrophyllite, Vanadium, Antimony, Feldspar, Cobalt, Scandium, Diamond, Uranium, Dolomite, Sodium Sulphate, Brucite</li> </ul>
99	Royalties
9	Active options <ul style="list-style-type: none"> <li>• Cash payments</li> <li>• Share payments</li> <li>• Exploration &amp; Development expenditures</li> <li>• Gross Metal Royalty</li> </ul>
54	Historical or NI 43-101 Resources

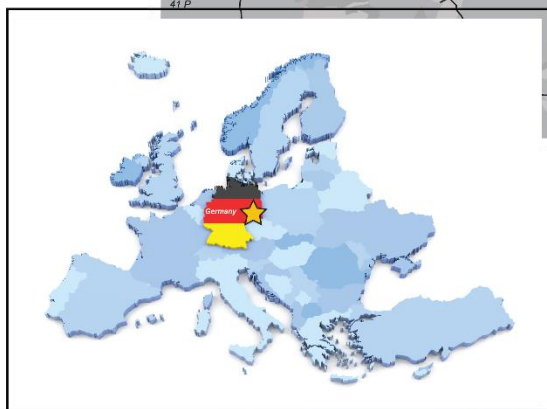
Note: Some properties have been combined due to proximity or infill staking

# Diversified Mineral Holdings



## Abitibi Geological Belt Quebec - Ontario

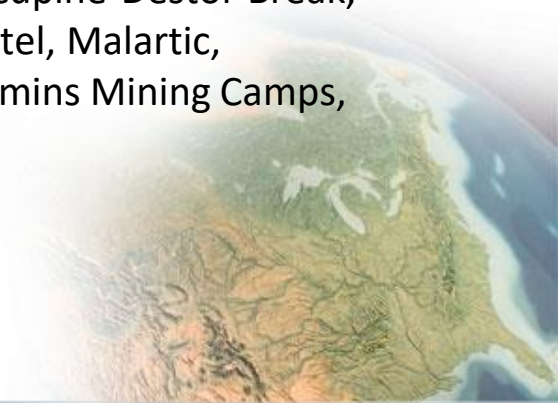
January 2024





All GLOBEX properties possess one or more key attributes:

- Historical or NI 43-101 Resource
- Drill intersections of Economic Interest
- Past production
- Mineralized showings or drill targets
  - geophysical, geochemical, geological
- Location on major ore localizing structures or in prolific mining camps
  - ex. Cadillac Break, Porcupine-Destor Break, Noranda, Val d'Or, Joutel, Malartic, Chibougamau and Timmins Mining Camps, etc.



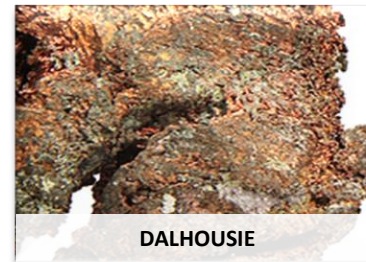
- Acquiring diversified high potential assets



Francoeur/Arntfield/Lac  
Fortune Gold Mines



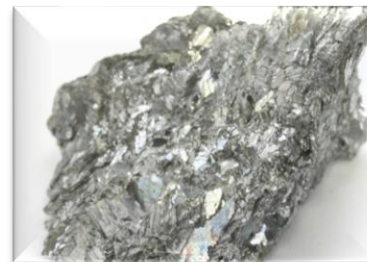
Very high grade GOLD values at  
surface in Waswanipi area



Multiple Cu-Ni zones  
over 6 km strike length



Manganese and Vanadium  
New Brunswick and Quebec



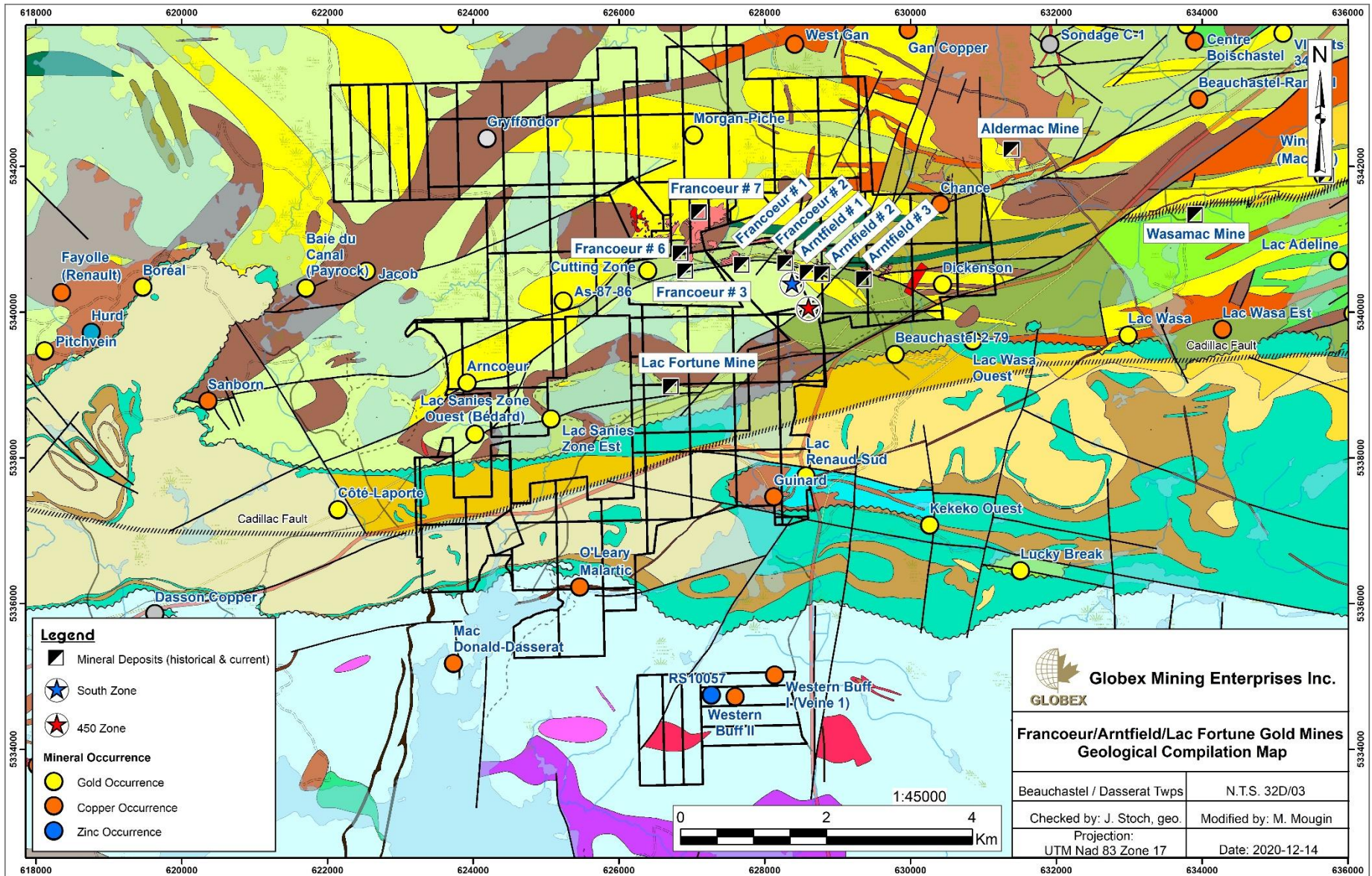
Inferred 100,000 oz  
Gold Resource  
New Brunswick



Multiple lithium projects in  
Quebec

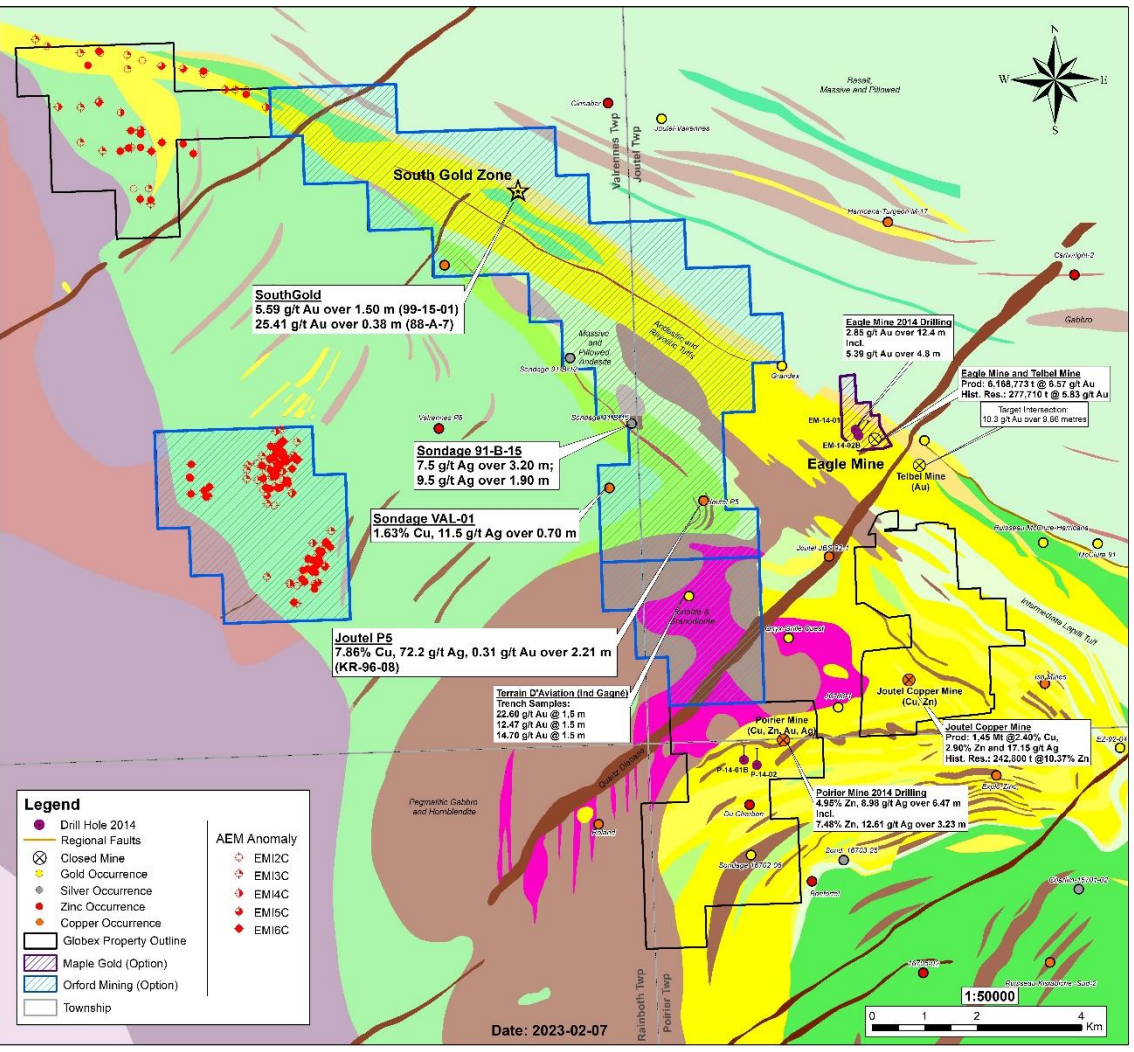


Scandium/Rare Earth  
Property in Quebec



# Joutel Compilation Map, Quebec

## 2 Options – Maple Gold Mines Ltd and Orford Mining Corporation



- Two former Copper, Zinc, Silver Mines (Poirier and Joutel Copper)
- One Former Gold Mine (Eagle Mine)
- Large exploration package including mines, showings and zones of alteration
- Known Resources:
  - **Joutel Mine:** 242,800 t at 10.37% Zn
  - **Poirier Mine:**
    - West & Q Zones – 1,400,863 T @ 1.24% Cu and 9.77% Zn
    - East Lens – 300,000 T @ 8.06% Zn
    - Main Zone – 534,000 T @ 2.5% Cu
  - **Eagle Gold Mine:** 277,710 t @ 5.83 g/t Au
  - + 11 km of Eagle/Telbel Gold Mines Horizon

Note: All resources are historical and do not conform to current NI 43-101 standards and thus should not be relied upon

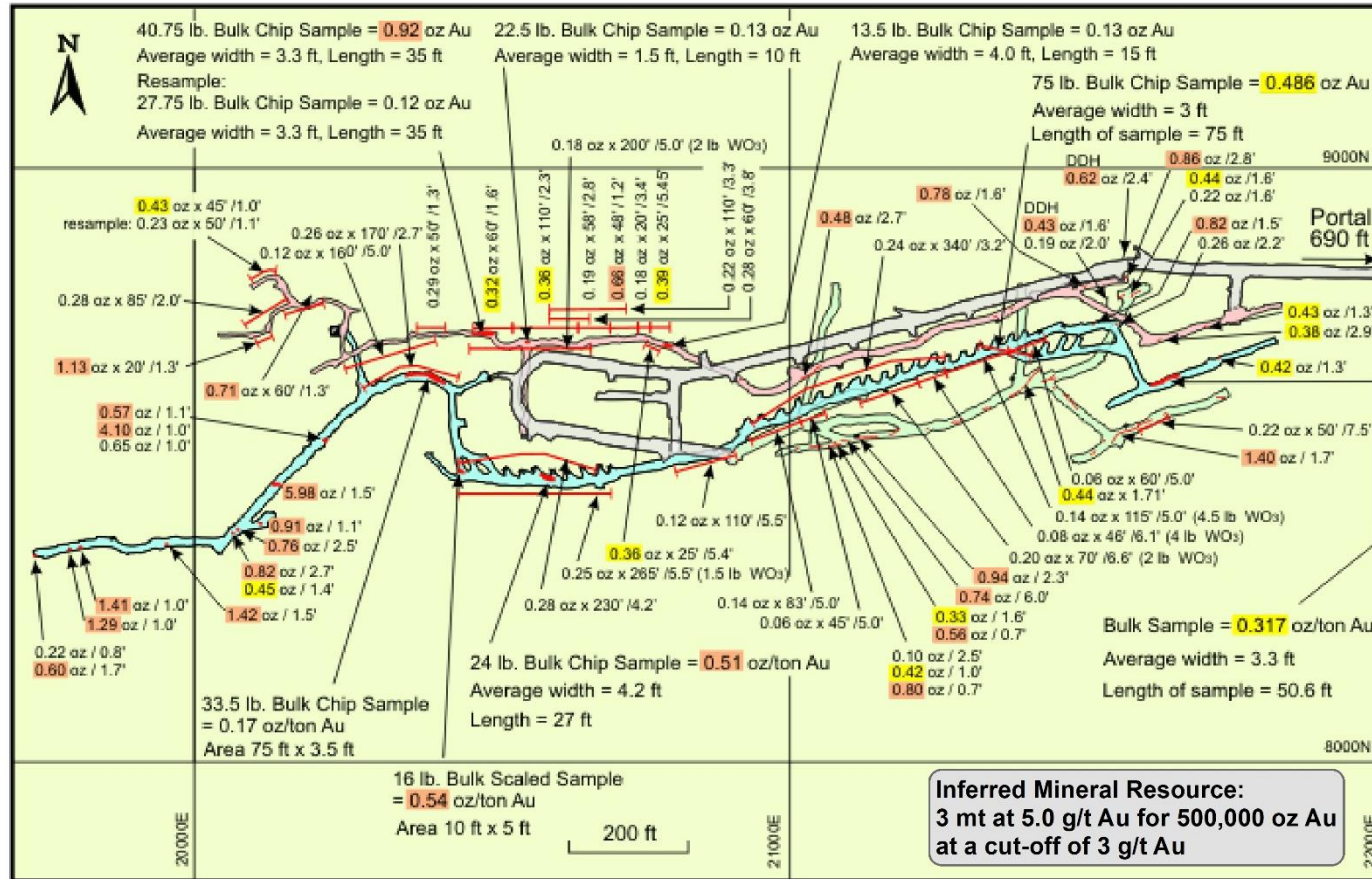
**GLOBEX MINING ENTERPRISES INC.**

**JOUTEL PROJECTS (32E07-08-09-10)**  
Joutel, Poirier, Rainboth and Valrennes Twps, QC

February 2023

# Labyrinth (Russian Kid) Gold Property, QC

Royalty – 5% GMR on first 25,000 oz Au, 3% GMR thereafter



**LABYRINTH (RUSSIAN KID) GOLD DEPOSIT**  
**Composite Level Plan**

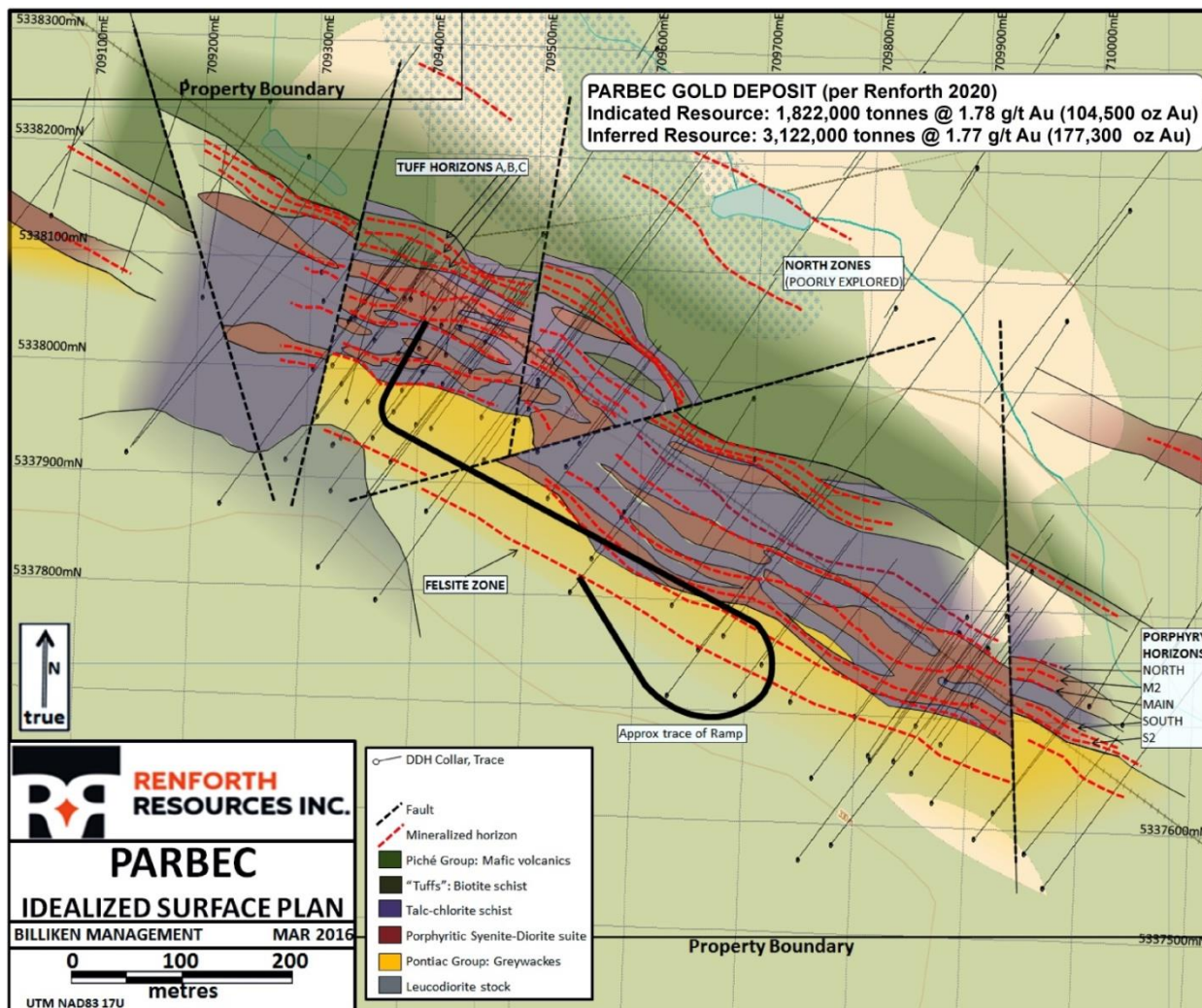
32 D/03, Dasserat Twp, Quebec

**GLOBEX MINING ENTERPRISES INC.**

\* Ref: Technical Report Resource update, Rocmec 1 Mineral Deposit, Abitibi West Quebec, Canada for Rocmec Mining Inc. written by SGS Canada - May 21, 2010

# Parbec Royalty Property

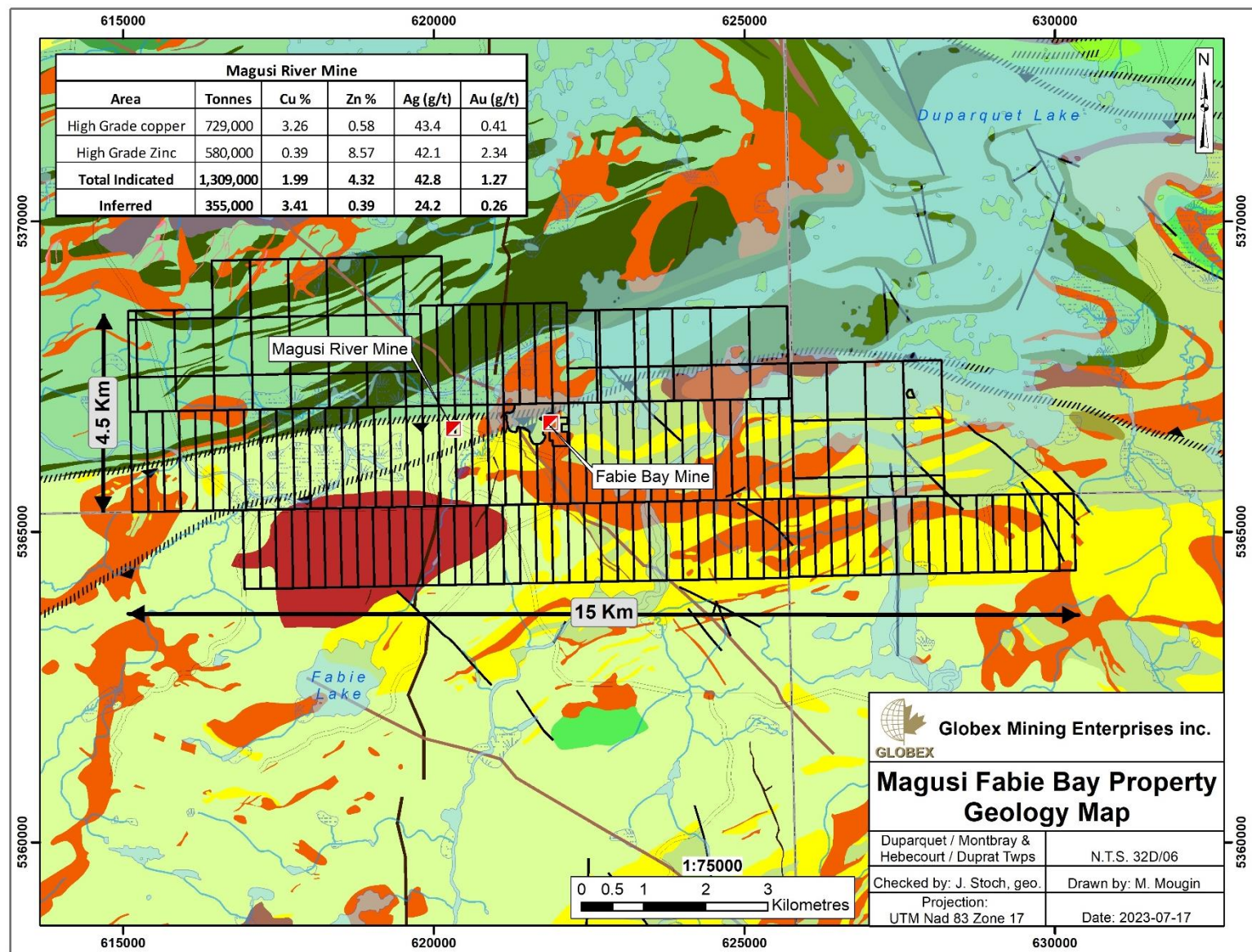
Renforth Resources Inc.- 3% GMR Royalty



- Located approximately 5 km along strike to the northwest of the large Canadian Malartic Gold Mine
- Underground access via a 580 m ramp
- April 2020 Mineral Resource:
  - 104,500 oz Au Indicated Resource
  - 177,300 oz Au Inferred Resource
- Globex retains 3% GMR

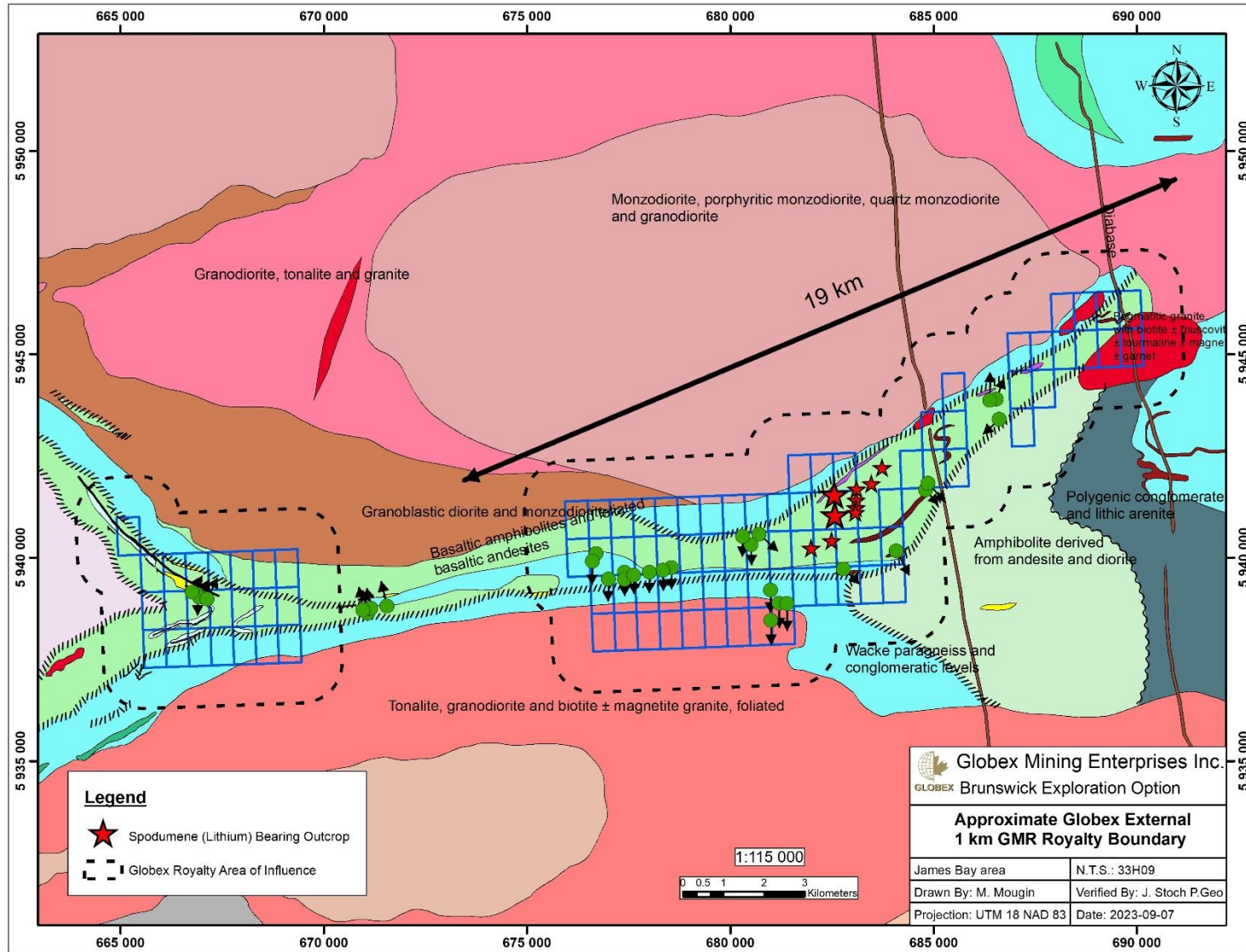


# Magusi-Fabie Bay Property, Quebec

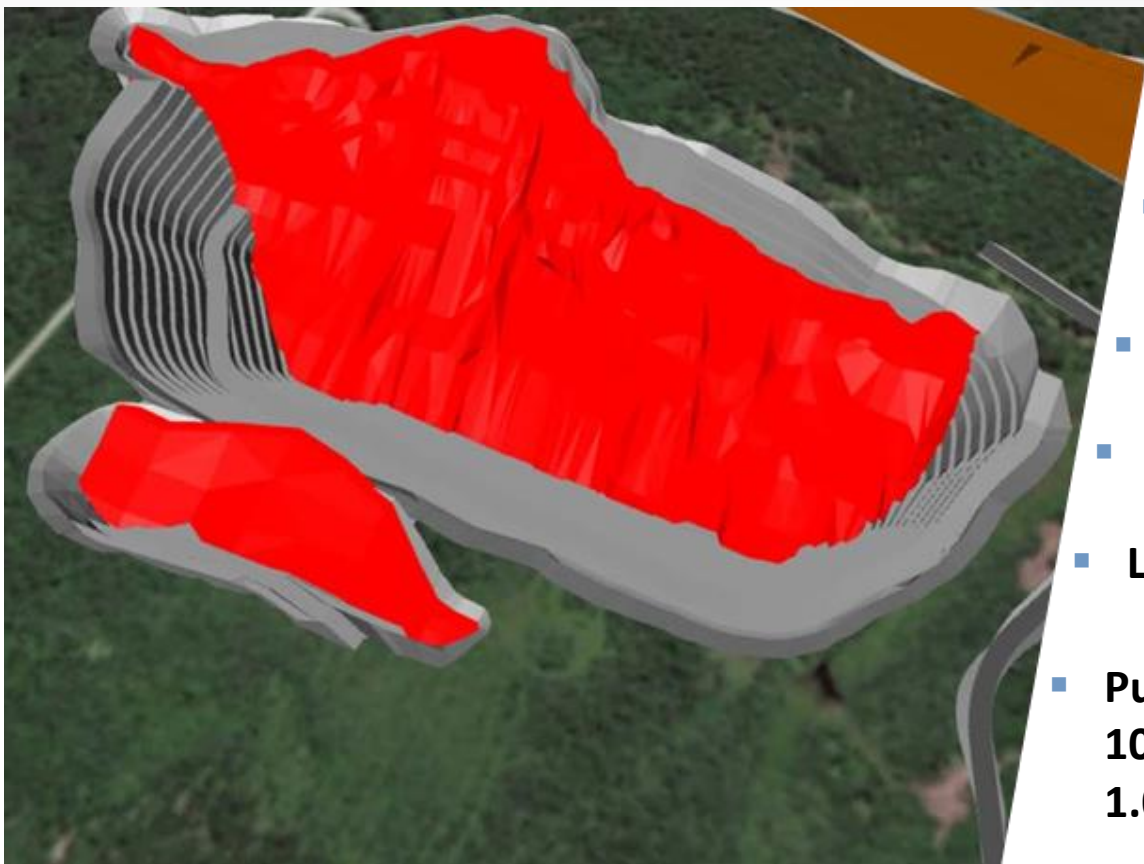


# Lac Escale

2.5 % GMR Lithium Royalty



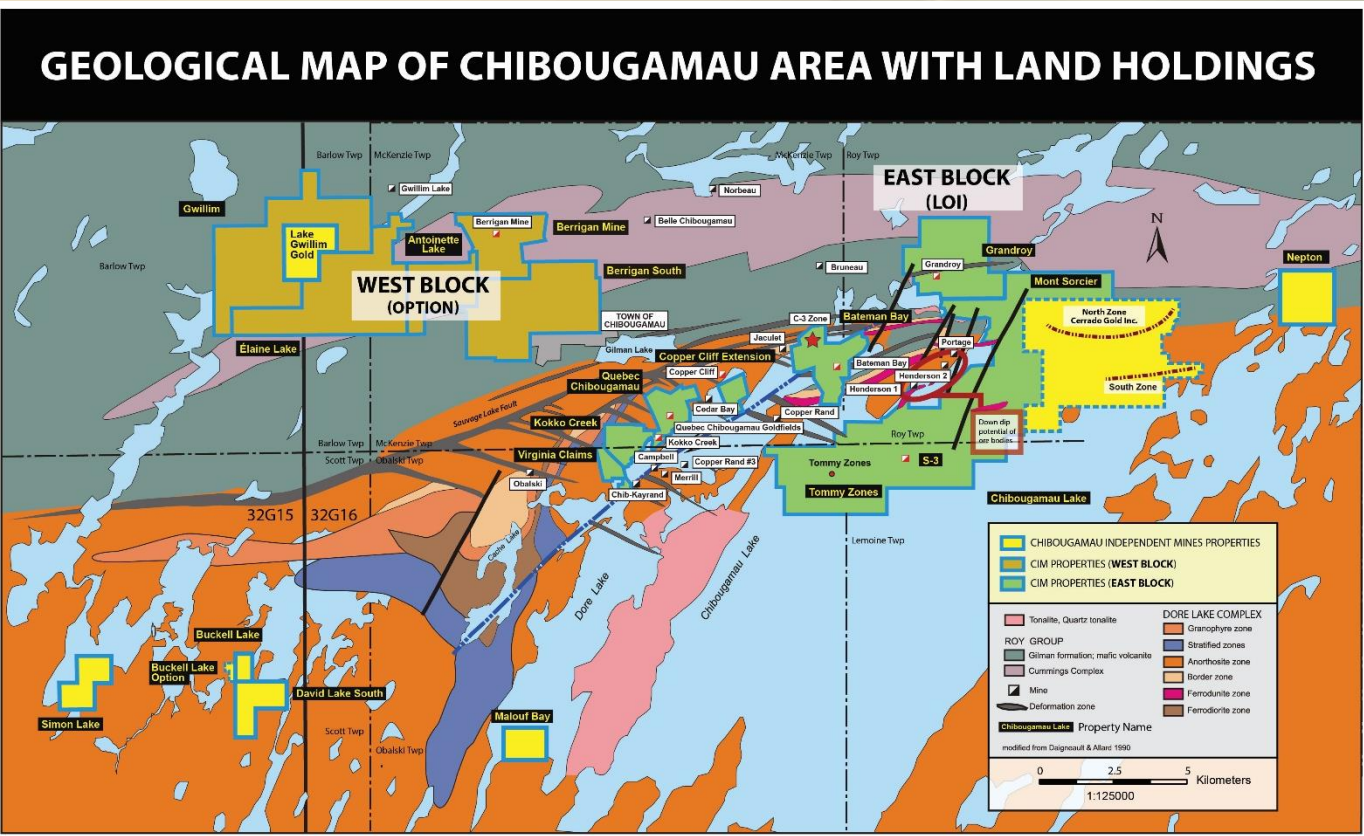
## Simple, Open-Cut Mining Operation



- **Measured, Indicated and Inferred resources**  
17,136,000 t @ 1.05% Li<sub>2</sub>O
- **Simple mining method**  
Truck and shovel operation
- **Competitive mining costs**
- **6% Li<sub>2</sub>O concentrate**
- **Large, thick tabular body**
- **Purchased nearby mill and 101,921,000 t deposit grading 1.06% Li<sub>2</sub>O**

Sayona Mining Limited Investor Presentation (see disclaimer)

\* See March 1, 2022 Sayona Press Release for details.



**CHIBOUGAMAU INDEPENDENT MINES INC.**

Lemoine, Obalski, McKenzie & Roy Townships, Quebec (32 G/16)

- 5 former copper-gold mines
- 3 extensions of copper-gold mines
- 2 unmined deposits (1 Cu/Zn and 1 Au/Zn/Ag)
- Mont Sorcier + 1 billion tonnes, iron/ vanadium deposits

**North Zone:** Inferred Resource: 507Mt grading 25.98% Magnetite  
 Indicated Resource: 559Mt grading 28.2% Magnetite  
**South Zone:** Inferred Resource: 88Mt grading 23.5% Magnetite  
 Indicated Resource: 119Mt grading 25.6% Magnetite

Globex Royalty 1% GMR on Iron  
 Chibougamau Independent Royalty 2% GMR on Iron and Vanadium

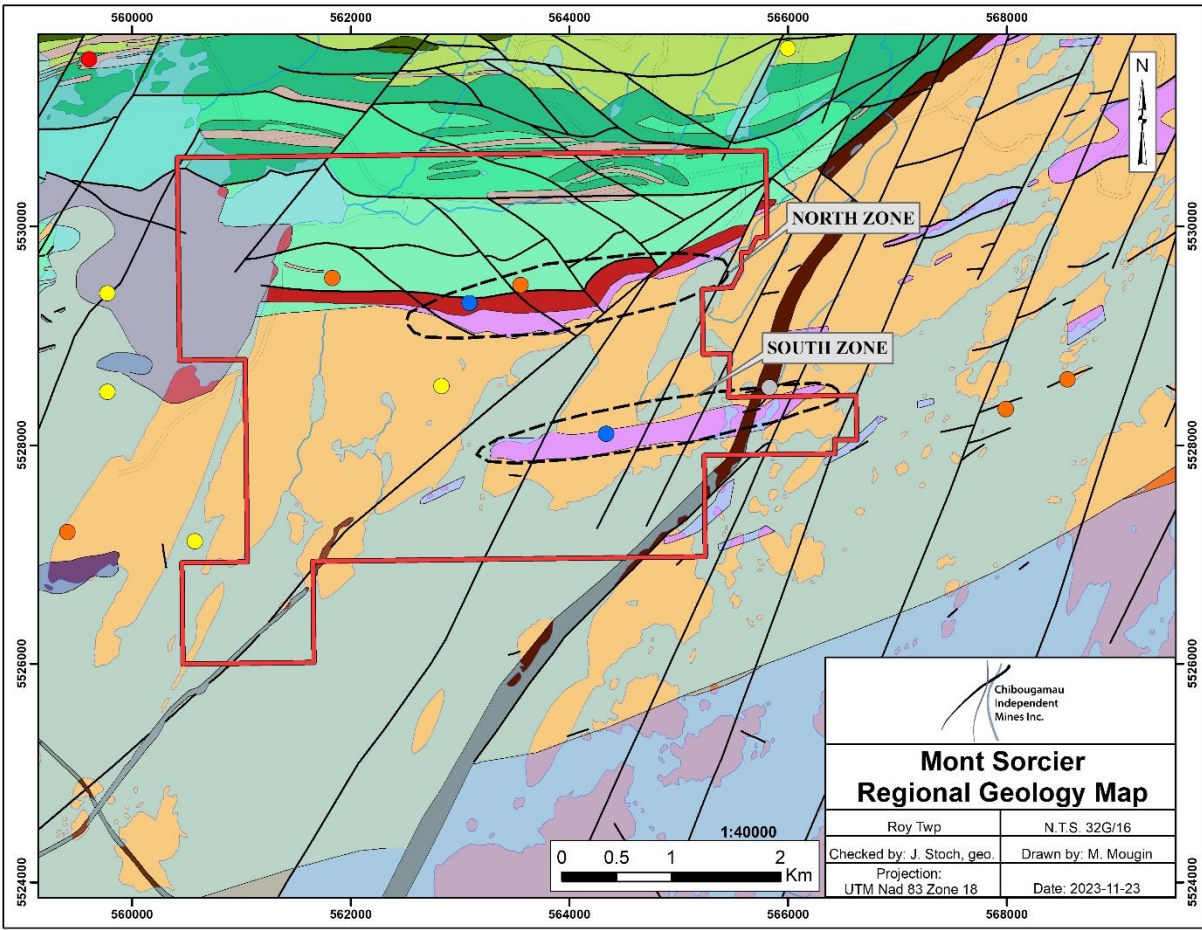
- Numerous drill-ready targets
- Globex Royalty 2% GMR (other than Mont Sorcier)

**Historical Production**

**47.6 Million Tons  
 Copper & Gold**

# Mont Sorcier

## NI 43-101 Resource



**North Zone:**

- Indicated Resource: 559.3 Mt grading 72.05% Fe and 0.21% V<sub>2</sub>O<sub>3</sub>
- Inferred Resource: 470.5 Mt grading 72.99% Fe and 0.18% V<sub>2</sub>O<sub>3</sub>

**South Zone:**

- Indicated Resource: 119.2 Mt grading 82.04% Fe and 0.17% V<sub>2</sub>O<sub>3</sub>
- Inferred Resource: 76.2 Mt grading 81.38% Fe and 0.13% V<sub>2</sub>O<sub>3</sub>

**Total:**

- Indicated Resource: 678.5 Mt grading 73.52% Fe and 0.20% V<sub>2</sub>O<sub>3</sub>
- Inferred Resource: 546.6 Mt grading 73.96% Fe and 0.17% V<sub>2</sub>O<sub>3</sub>

+ 1,225 million tonnes

*By: InnovExplo and Soutex, Revised Sept 8, 2022*

**Preliminary Economic Assessment (Cerrado Gold Inc.)**  
**NPV (8%) Post Tax 1,607 M\$ US**  
**Post Tax Payback 1.8 Years**  
**Post Tax IRR 43%**  
**Average Annual Free Cash Flow \$235 M US**

## Significant Gold Intersections Within Previous Drilling Surface diamond drill holes Berrigan Property 32G16

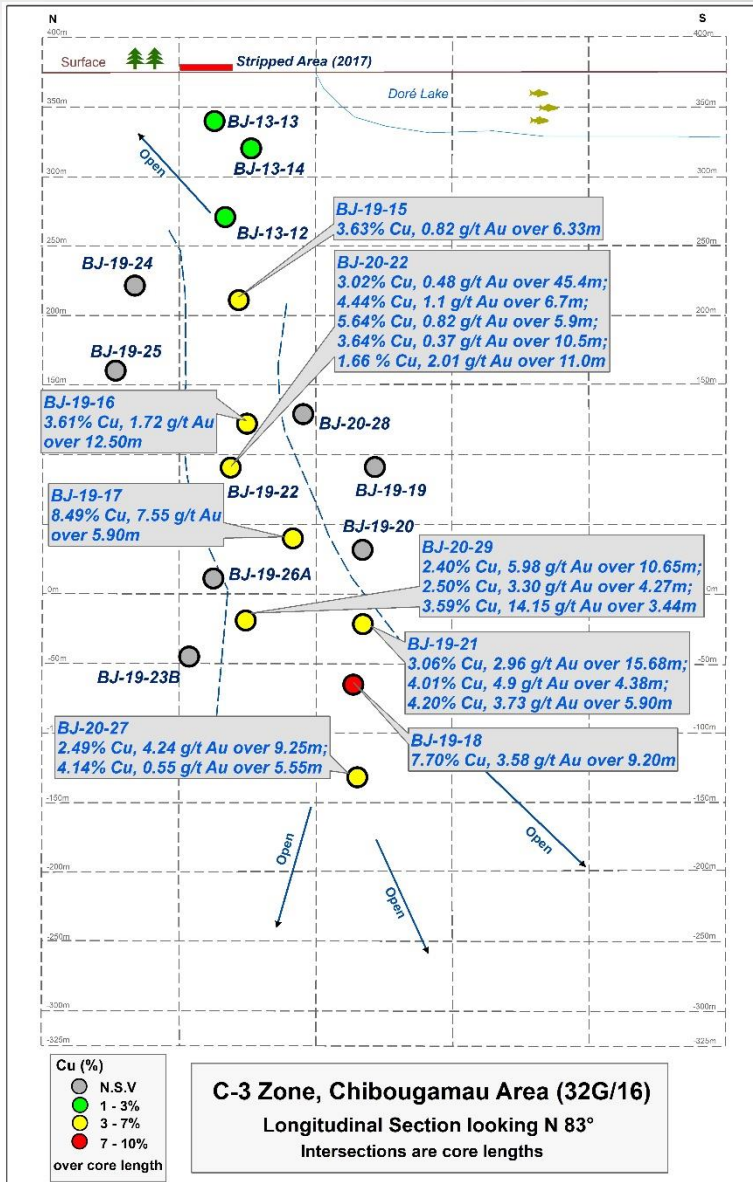
Hole #	From	To	Interval	% Zn	% Cu	Au g/t	Ag g/t
A-005	131.4 m	140.2 m	8.8 m	5.70%		6.96 g/t	
A-010	97.3 m	105.2 m	7.9 m	4.43%		4.94 g/t	25.36 g/t
A-016	18.9 m	21.2 m	2.3 m	1.51%		6.43 g/t	
	76.2 m	77.7 m	1.5 m	3.45%		8.91 g/t	
A-061	91.6 m	100.6 m	9.0 m	3.76%	0.16%	3.00 g/t	17.24 g/t
	107.1 m	115.7 m	8.6 m	6.15%	0.17%	8.14 g/t	39.70 g/t
A-062	59.3 m	61.1 m	1.8 m	6.92%		4.62 g/t	17.14 g/t
A-063	113.7 m	114.3 m	0.6 m	17.55%		49.23 g/t	404.64 g/t
	129.4 m	132.8 m	3.4 m	8.86%		8.88 g/t	68.16 g/t
	138.9 m	141.5 m	2.6 m	4.69%		4.04 g/t	11.14 g/t
A-065	121.6 m	125.7 m	4.6 m	7.67%		6.08 g/t	21.56 g/t
	139.8 m	144.5 m	4.7 m	2.80%		3.55 g/t	7.64 g/t
	164.7 m	167.2 m	2.5 m	3.13%		6.95 g/t	15.44 g/t
A-066	100.6 m	101.8 m	1.2 m	22.90%		36.65 g/t	39.73 g/t
	159.8 m	168.8 m	9.0 m	6.26%		5.19 g/t	19.60 g/t
A-070	157.1 m	158.2 m	1.1 m	16.75%		10.96 g/t	
A-072	188.7 m	190.9 m	2.2 m	5.08%		3.13 g/t	
A-073	144.8 m	145.1 m	0.3 m	27.90%		32.88 g/t	
A-076	126.3 m	129.8 m	3.5 m	11.07%		3.02 g/t	
A-083	94.3 m	96.3 m	2.0 m	4.45%		3.79 g/t	10.34 g/t
	119.4 m	132.6 m	13.2 m	4.99%		2.88 g/t	15.91 g/t
A-084	130.3 m	142.8 m	12.5 m	4.58%		5.10 g/t	17.18 g/t
A-086	50.9 m	52.1 m	1.2 m	7.00%		15.07 g/t	59.60 g/t
A-103	56.4 m	59.4 m	3.0 m	5.84%		11.61 g/t	

Hole #	From	To	Interval	% Zn	% Cu	Au g/t	Ag g/t
U-02	44.9 m	45.6 m	0.7 m	2.95%		17.81 g/t	89.74 g/t
	90.4 m	91.4 m	1.0 m	13.80%		26.72 g/t	58.91 g/t
	95.8 m	108.7 m	12.9 m	5.75%		3.11 g/t	15.17 g/t
U-03	8.2 m	16.6 m	8.4 m	13.09%		6.98 g/t	20.71 g/t
	49.4 m	64.0 m	14.4 m	8.69%		3.41 g/t	17.49 g/t
U-04	17.4 m	19.7 m	2.3 m	12.77%		4.60 g/t	14.65 g/t
	85.9 m	86.6 m	0.7 m	7.05%		37.68 g/t	78.09 g/t
U-09	71.8 m	75.8 m	4.0 m	2.32%		4.32 g/t	12.43 g/t
SU-23	2.8 m	10.6 m	7.8 m	3.98%		3.33 g/t	20.54 g/t
SU-52	0.0 m	5.0 m	5.0 m	3.88%		3.01 g/t	19.82 g/t
SU-59	0.0 m	4.1 m	4.1 m	5.40%		3.51 g/t	31.04 g/t
TA-87-27	31.1 m	32.3 m	1.2 m	5.60%		17.98 g/t	37.33 g/t
TA-87-40	81.1 m	83.5 m	2.4 m	10.05%		2.96 g/t	50.05 g/t
	91.4 m	94.2 m	2.8 m	10.82%		3.23 g/t	19.19 g/t
TA-90-50	65.5 m	70.1 m	4.6 m	4.12%		6.78 g/t	10.12 g/t
	84.6 m	87.5 m	2.9 m	3.90%		3.20 g/t	
	95.5 m	106.7 m	11.2 m	10.39%	0.10%	2.54 g/t	19.26 g/t
	114.0 m	129.5 m	15.5 m	6.57%	0.10%	8.05 g/t	23.58 g/t
TA-90-51	197.4 m	200.0 m	2.6 m	5.39%	0.21%	3.52 g/t	20.10 g/t
TA-90-52	201.2 m	203.3 m	2.1 m	5.21%		5.70 g/t	11.60 g/t
TA-90-56	81.0 m	84.4 m	3.4 m	5.75%		4.06 g/t	
	164.4 m	166.9 m	2.5 m	5.23%		6.18 g/t	
	215.7 m	219.6 m	3.9 m	6.74%		3.95 g/t	
TLT-09	247.4 m	249.7 m	2.3 m			4.28 g/t	

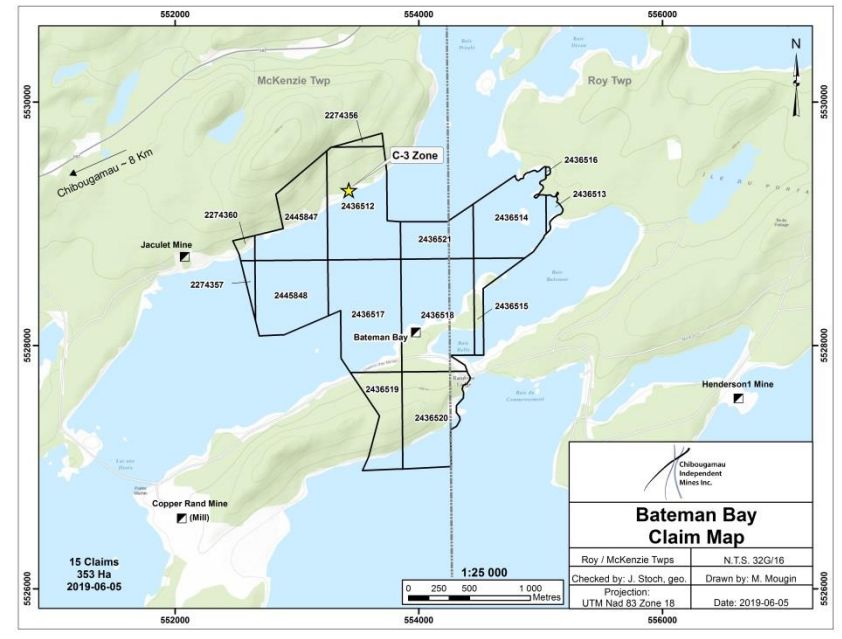
Globex: 2% Gross Metal Royalty

# C-3 Copper/Gold Zone (Bateman Bay)

McKenzie & Roy Townships, Quebec (NTS 32G/16), **Royalty – 2% GMR**

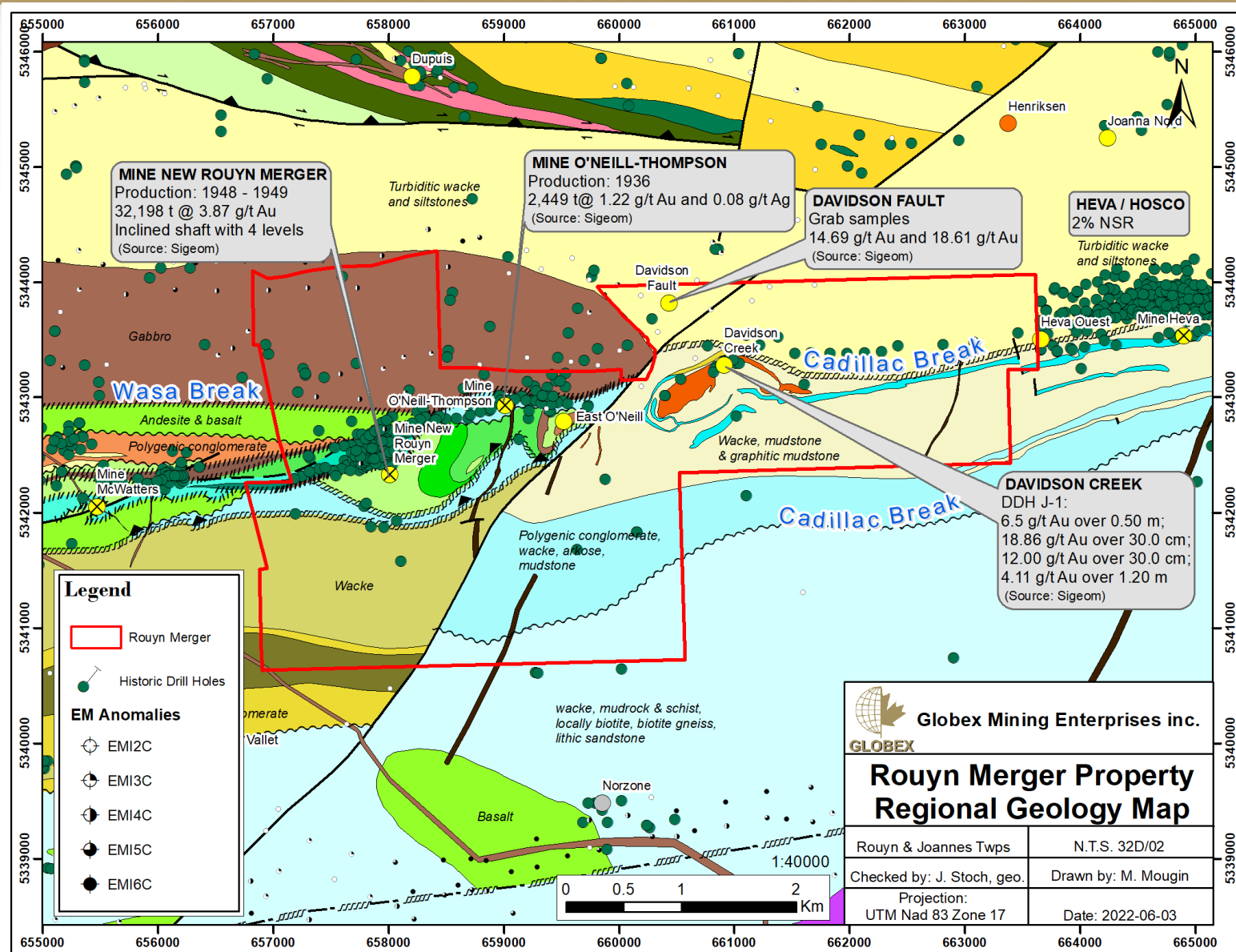


- Chibougamau Mining District
- Intercepted from surface to 450m (±1,500 ft) vertical
- High grade copper and gold (some silver and cobalt)
- Open to depth and along strike (both directions)
- Easily accessible by road and near the Town of Chibougamau
- Globex: 3% Gross Metal Royalty



# Rouyn Merger Gold Property, Quebec

Crews Currently Active on Property





# Montalembert Project, Quebec

100% Owned- 7396 hectares

Photo # 1

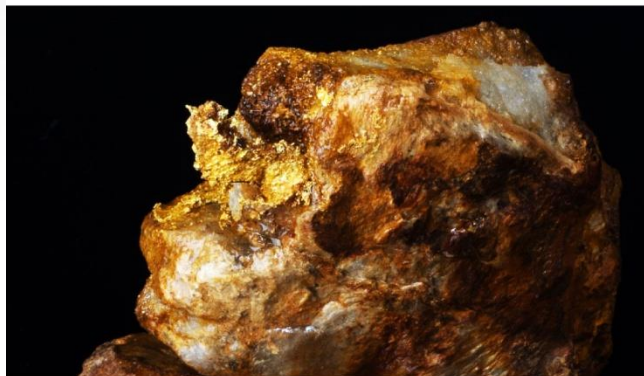
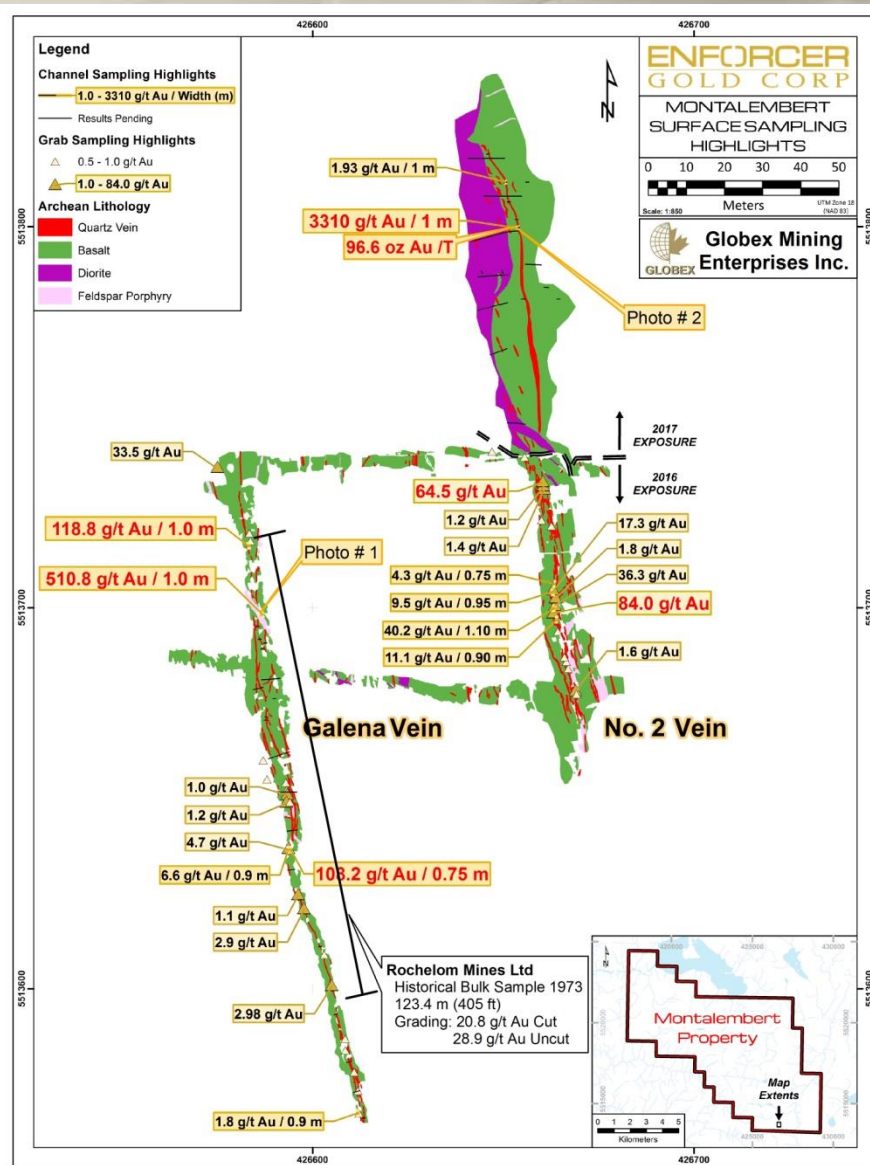
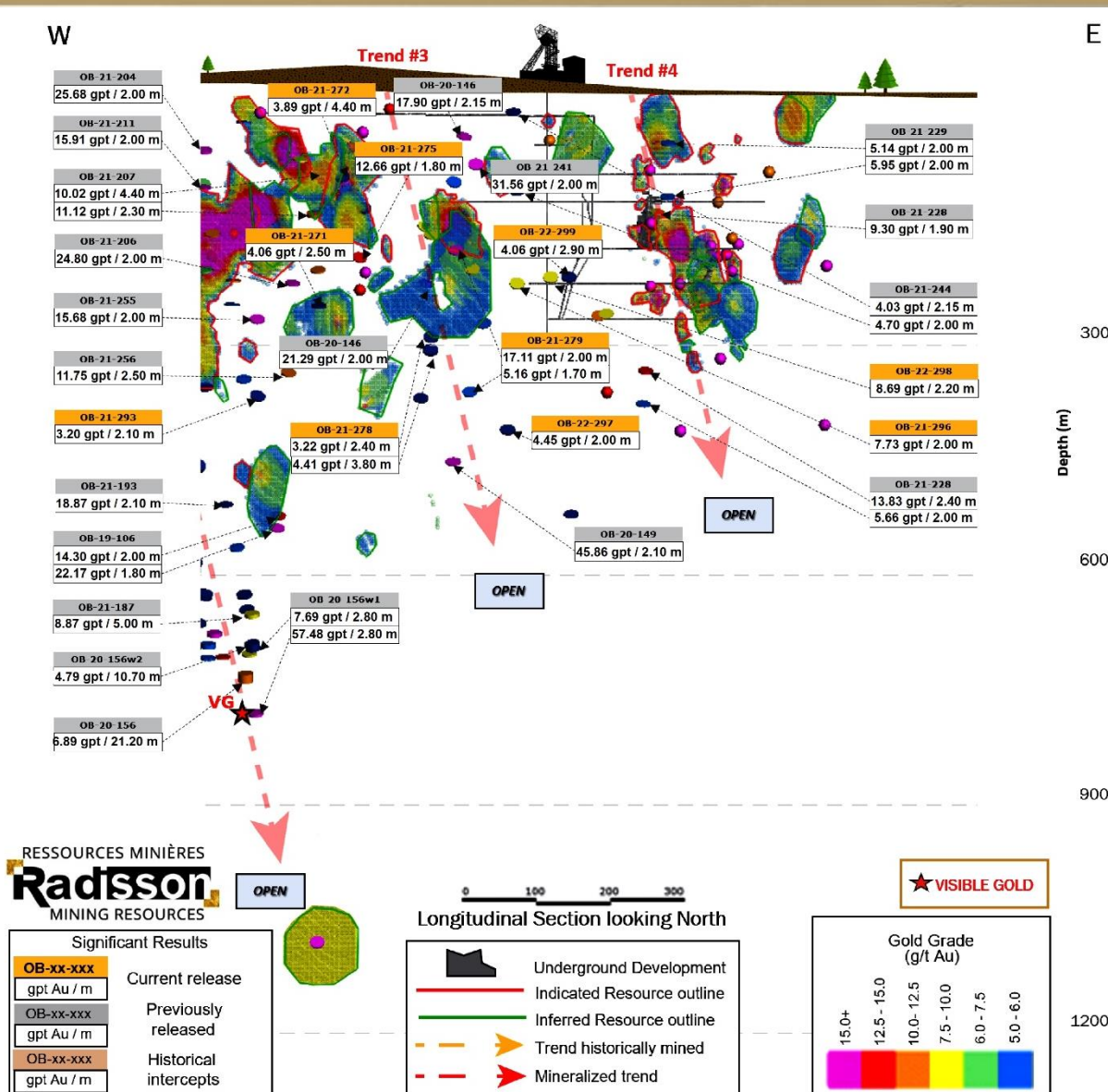


Photo # 2



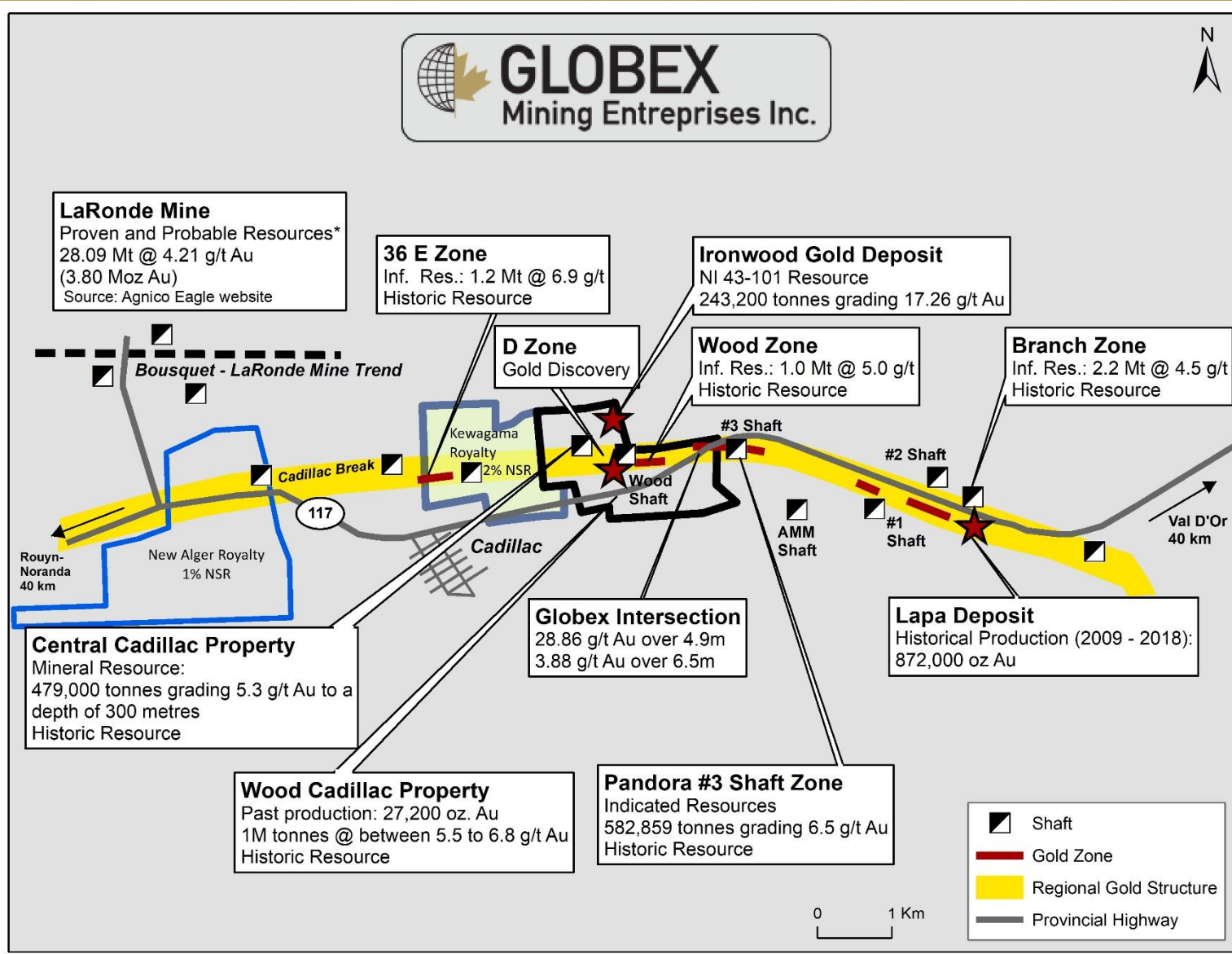
# Kewagama – Gold Royalty Project, Quebec

Royalty – 2% NSR: Open to Depth and along Strike



# Cadillac Gold Camp, Quebec

2% NSR on Kewagama Gold Mine & 1% NSR on New Alger Gold Mine

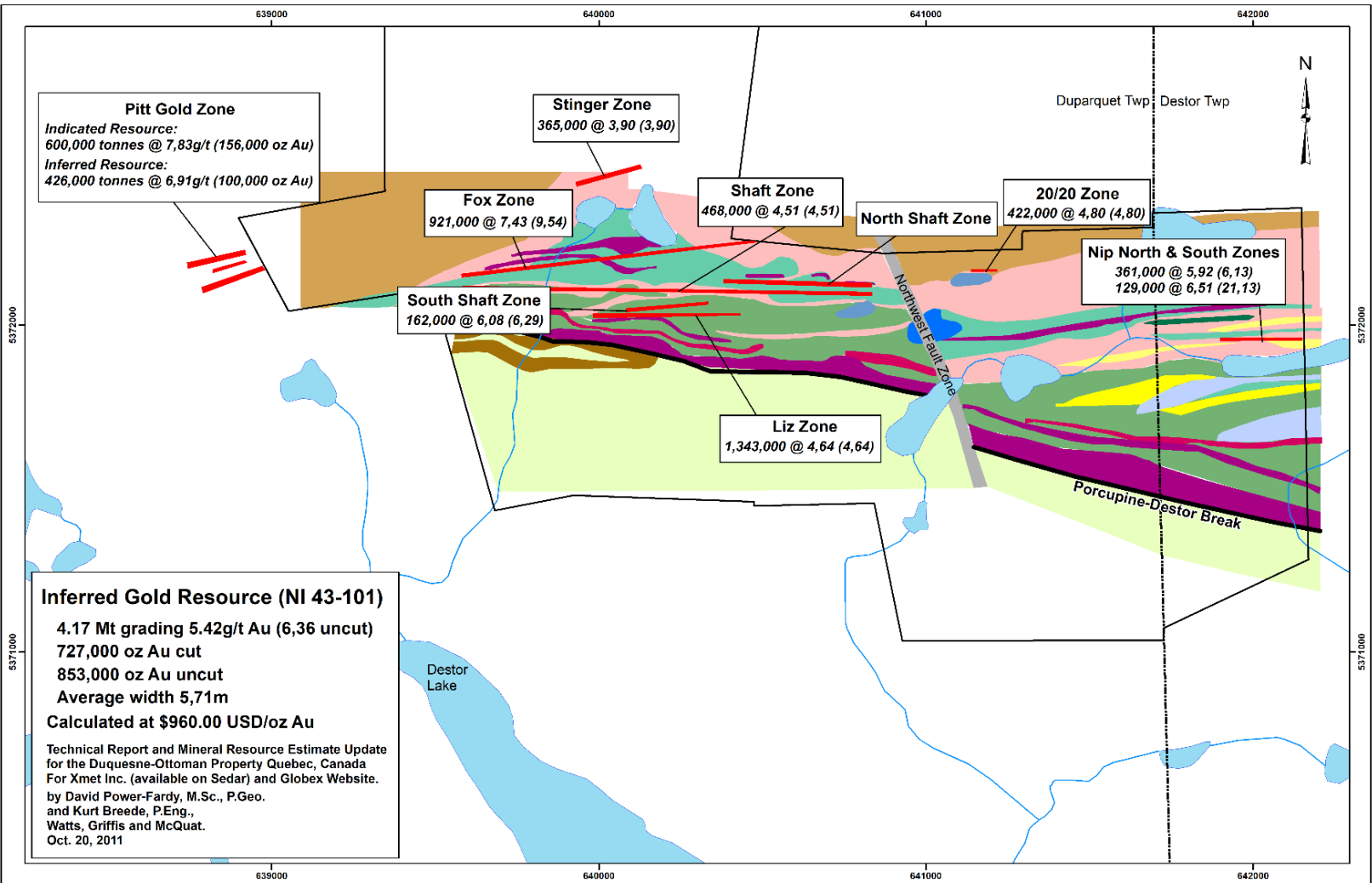


\*Ref. Agnico Eagle Mines

# Duquesne West, Quebec (50% Interest)



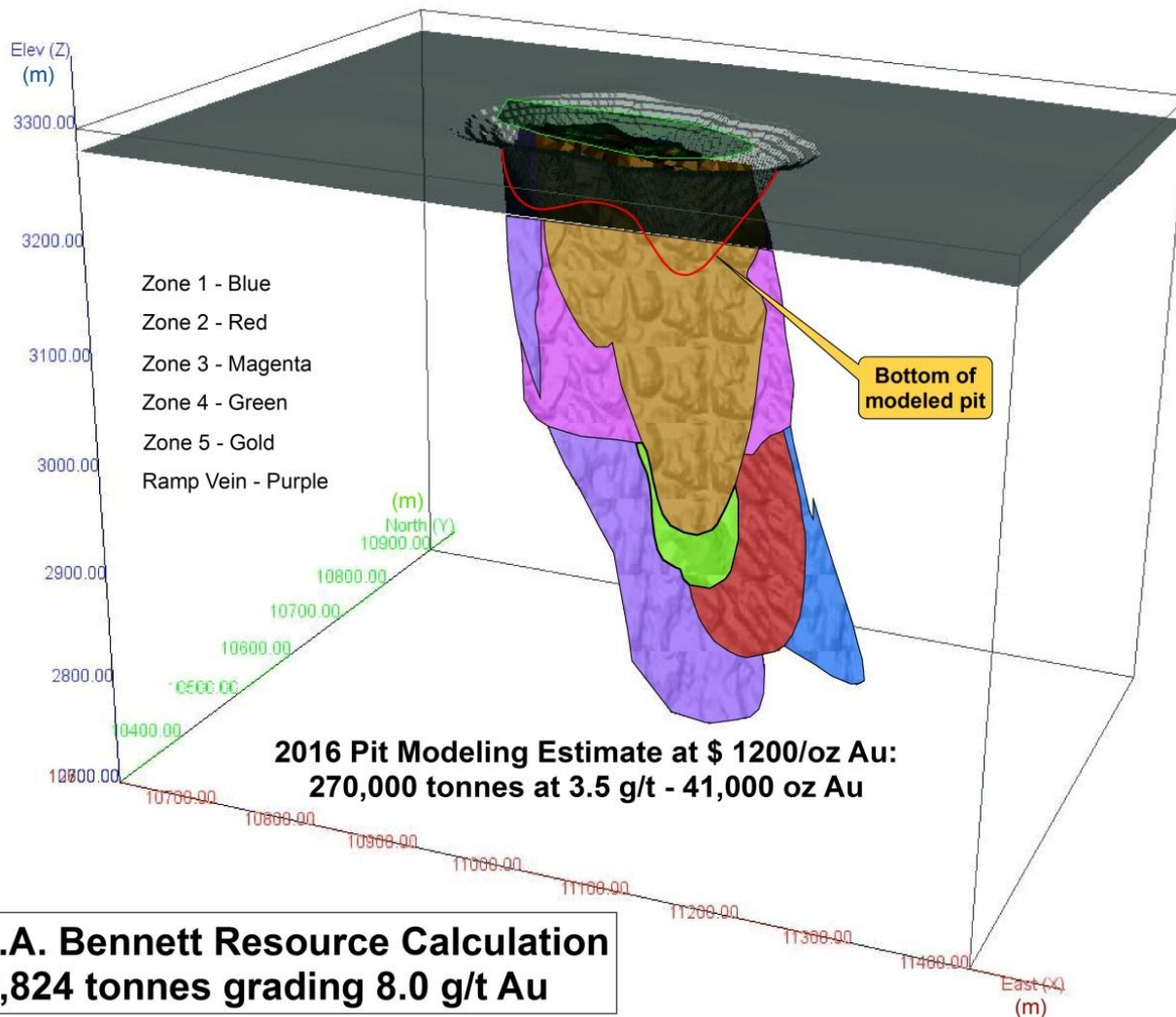
Option – Emperor Metals – Cash \$10M, 15M Shares, \$12M Work over 5 years, 3% GMR



- Multiple gold zones adjoining and related to the Porcupine Destor Break
- Many gold zones open to depth

# Ramp Project – Whittle Pit Design 2016 – 5 Zone

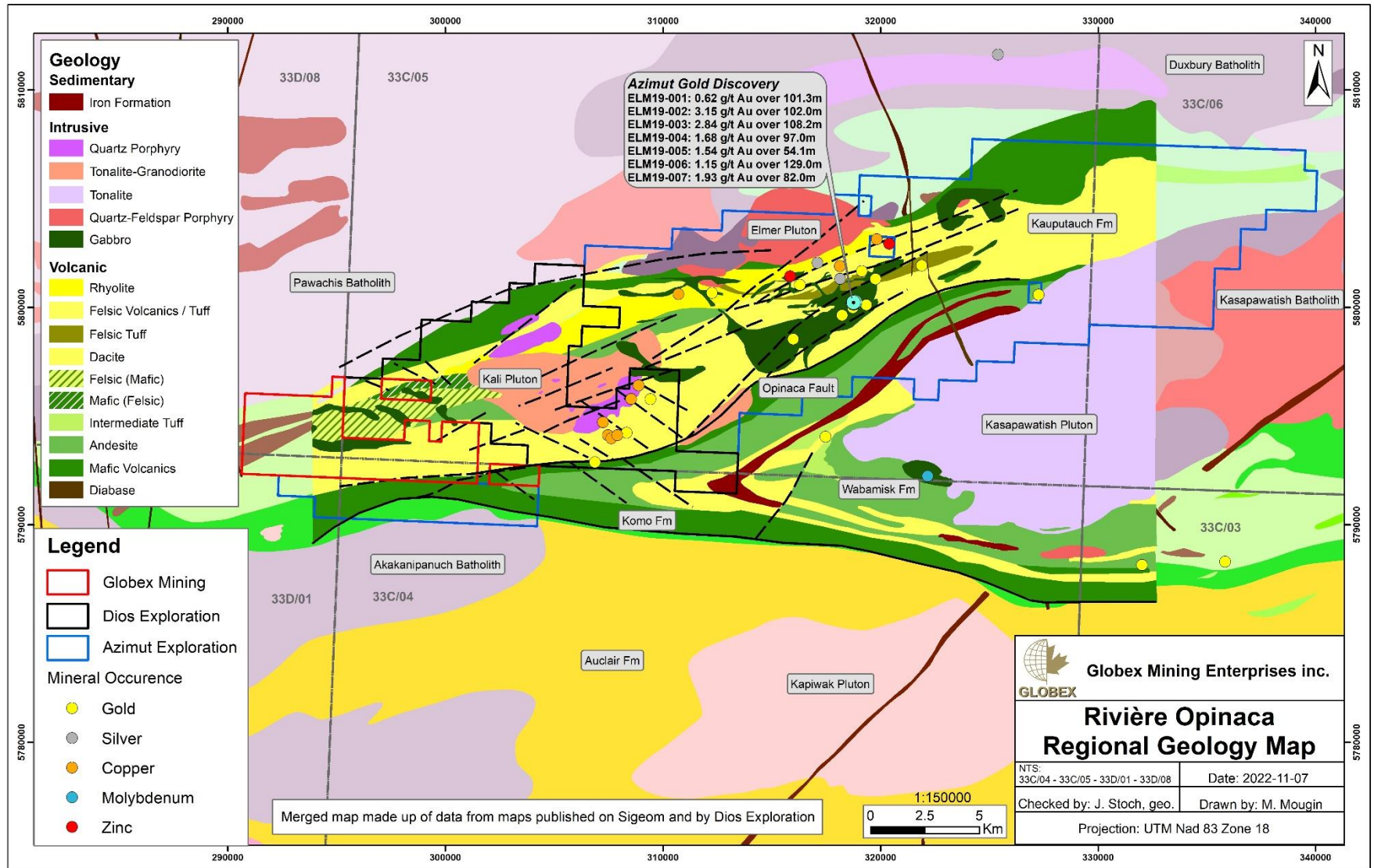
Large Property- 100% owned



Source: RJK Exploration Ltd. 2016. Historical Non NI 43-101 Resources

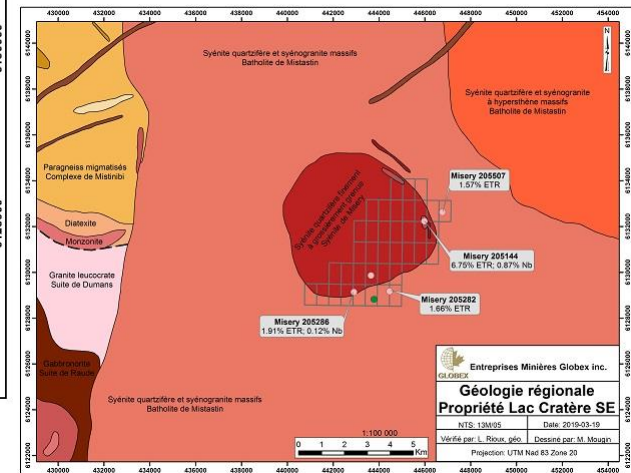
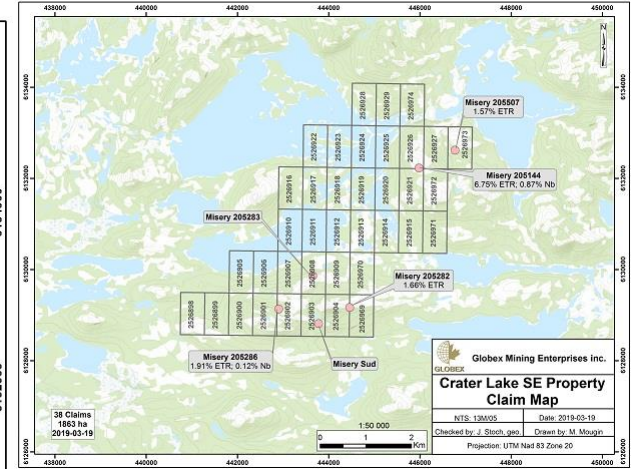
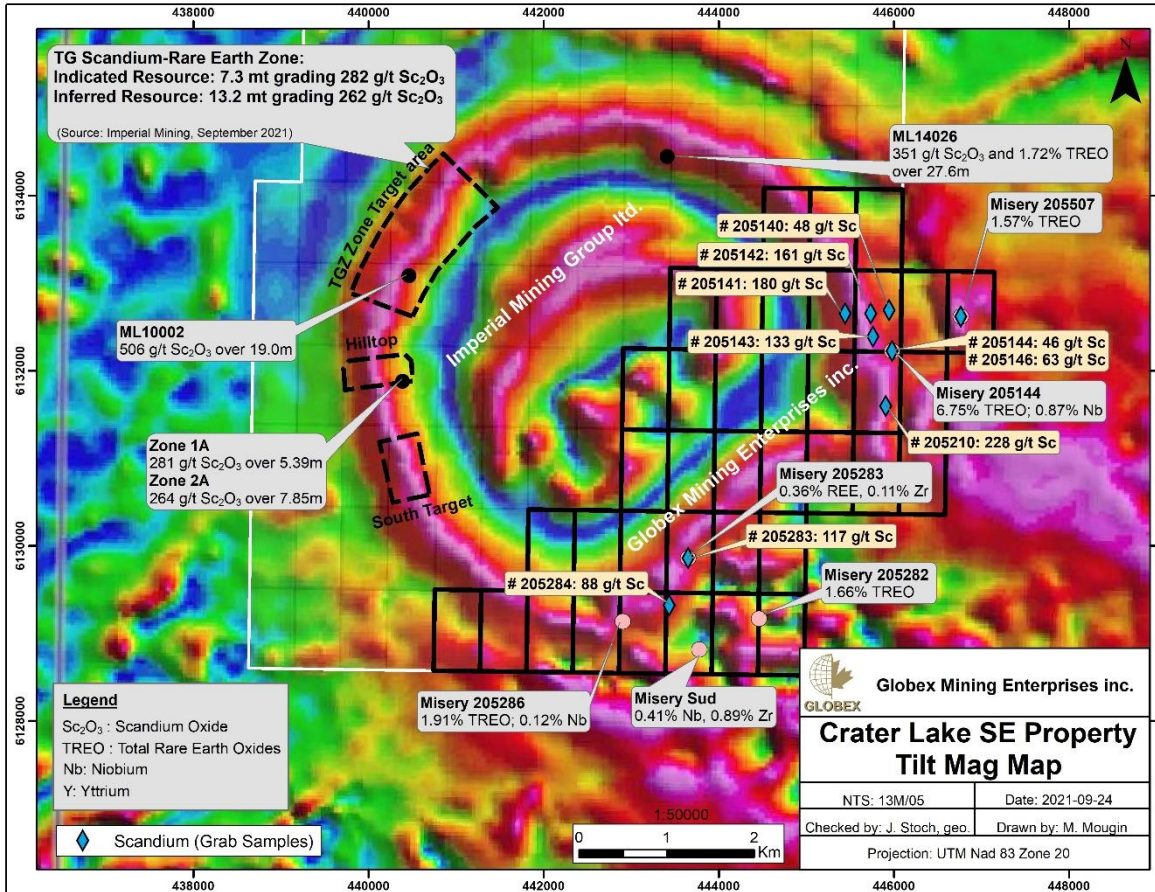
# Rivière Opinaca Property *James Bay area, Quebec*

Large Property – 100% owned



# Crater Lake Scandium/Rare Earth Property

NTS 13M/05, Quebec: *Globex Controls Half of the Ore Bearing Unit*

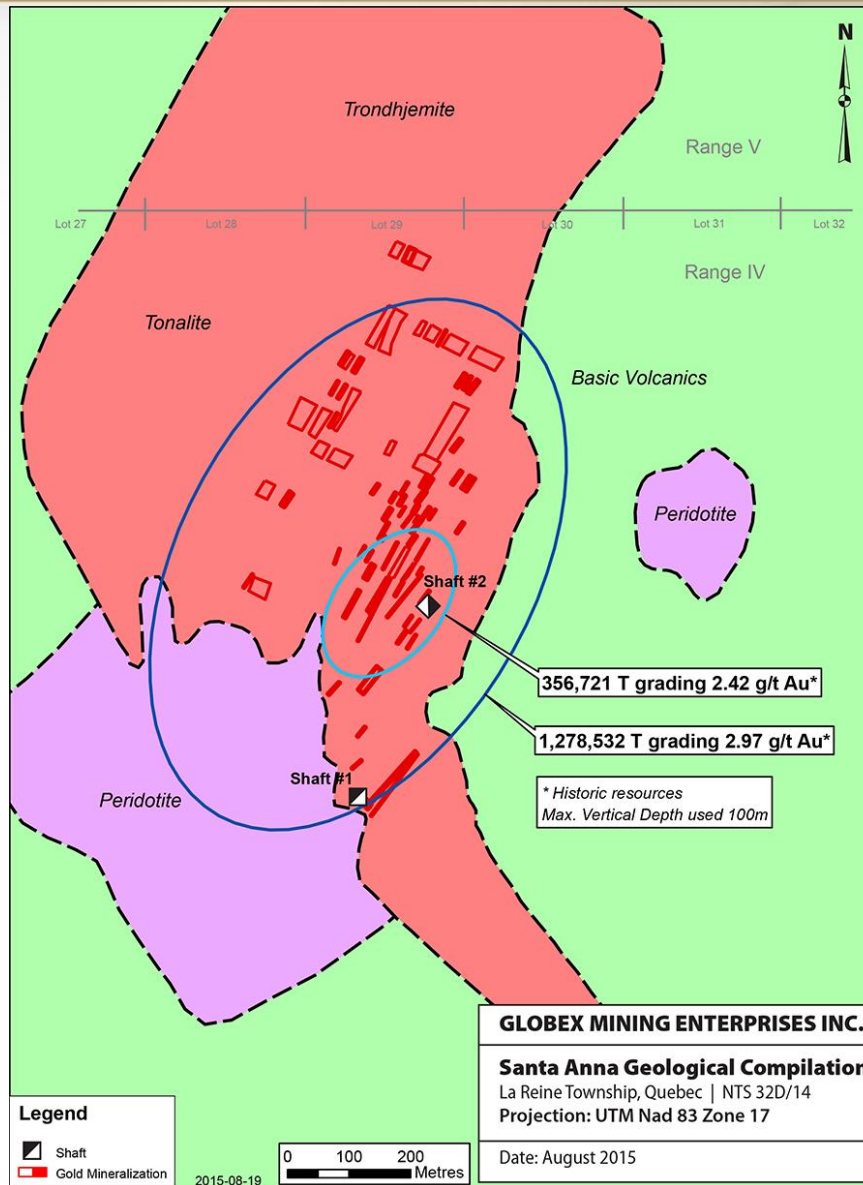


## Scandium Property

Used in aluminium alloys in the automotive, aerospace, fuel-cell industries and sports equipment.  
Facilitates welding of aluminium, eliminating rivets.

# Santa Anna Property, Quebec

## New Interpretation of Gold Zone Dip and Plunge



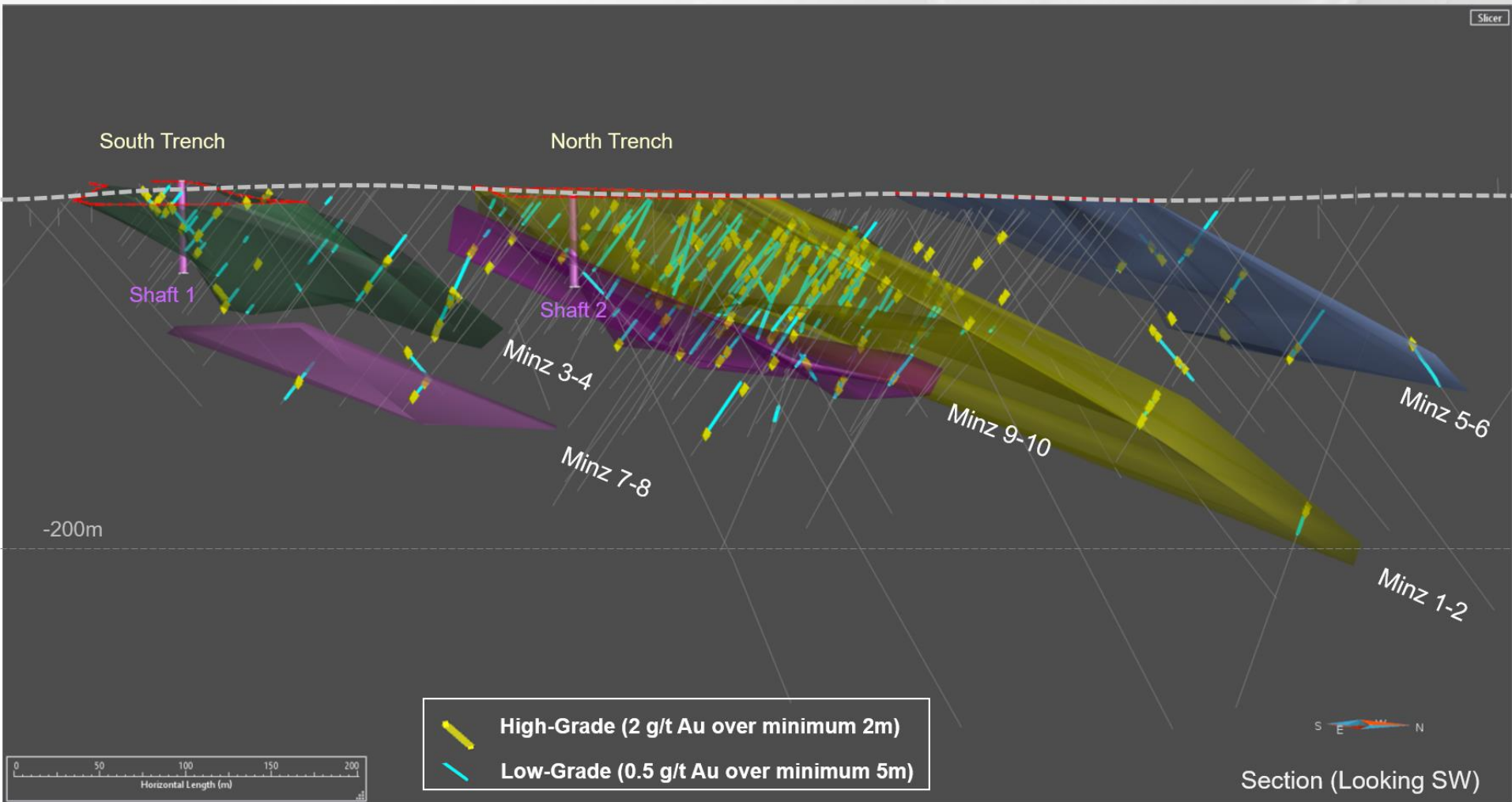
- Surface exposed gold in silica rich zones
- Potential open pit?
- Potential fluxing ore?
- Accessible by paved and gravel, all season roads
- Minimal strip ratio
- Coarse free gold





# Santa Anna Property

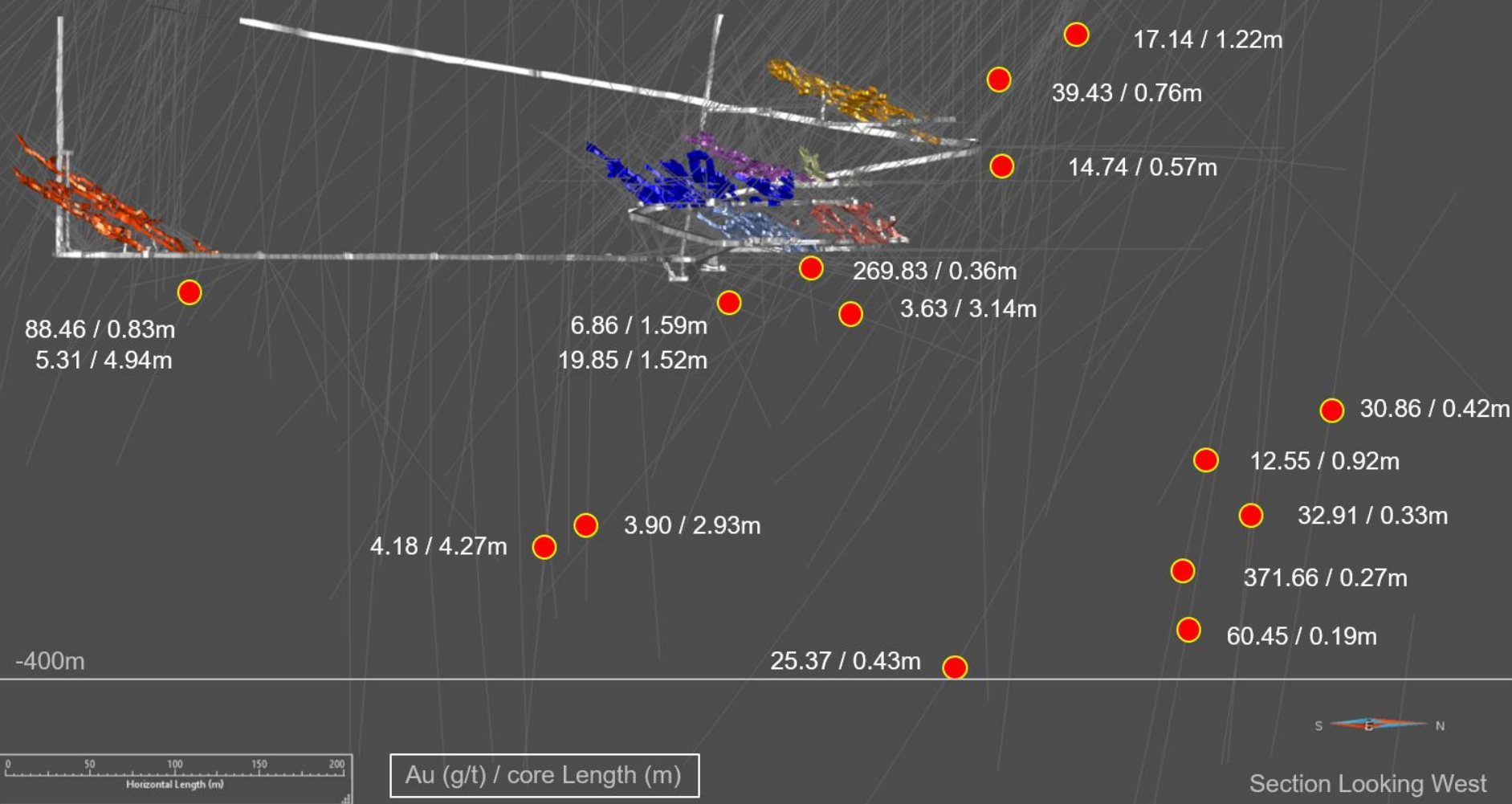
High grade & low grade mineralization



# Wrightbar Gold Property, Quebec

Numerous Gold Intersections Outside Workings

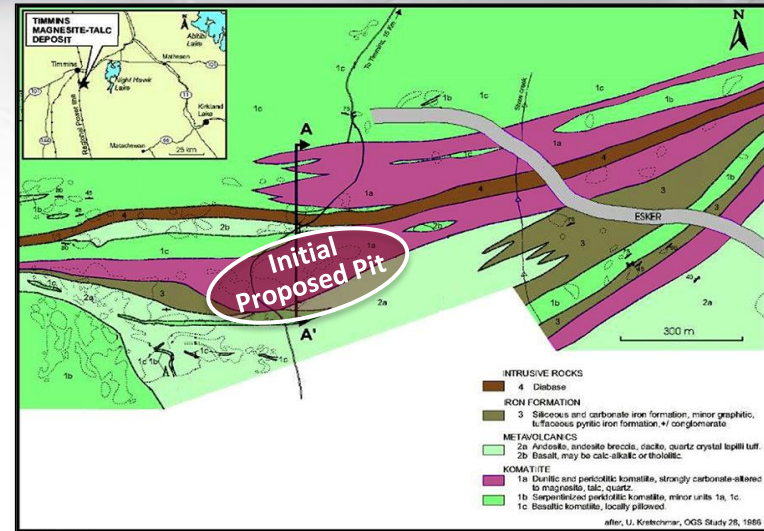
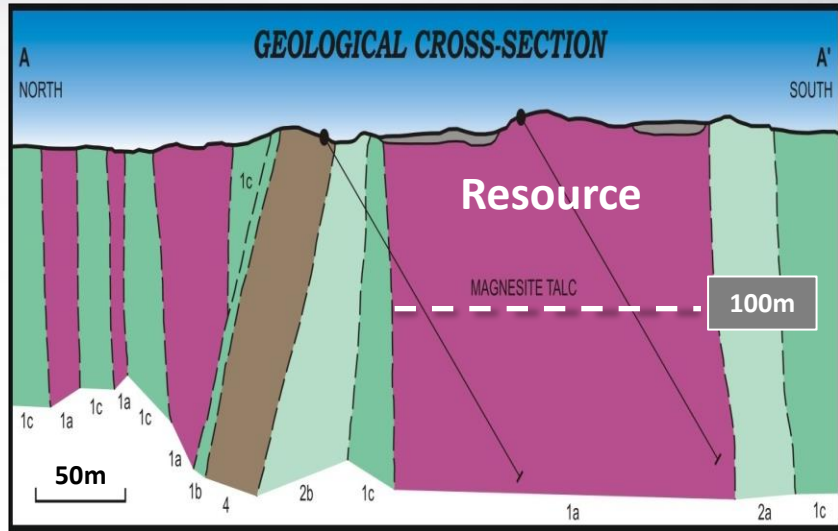
Slicer



*High-grade intersections (Core length). No capping.  
Subset from composites based on 3 g/t Au over minimum 3m*

# Timmins Talc-Magnesite Project, Ontario

World Class – 100% Owned



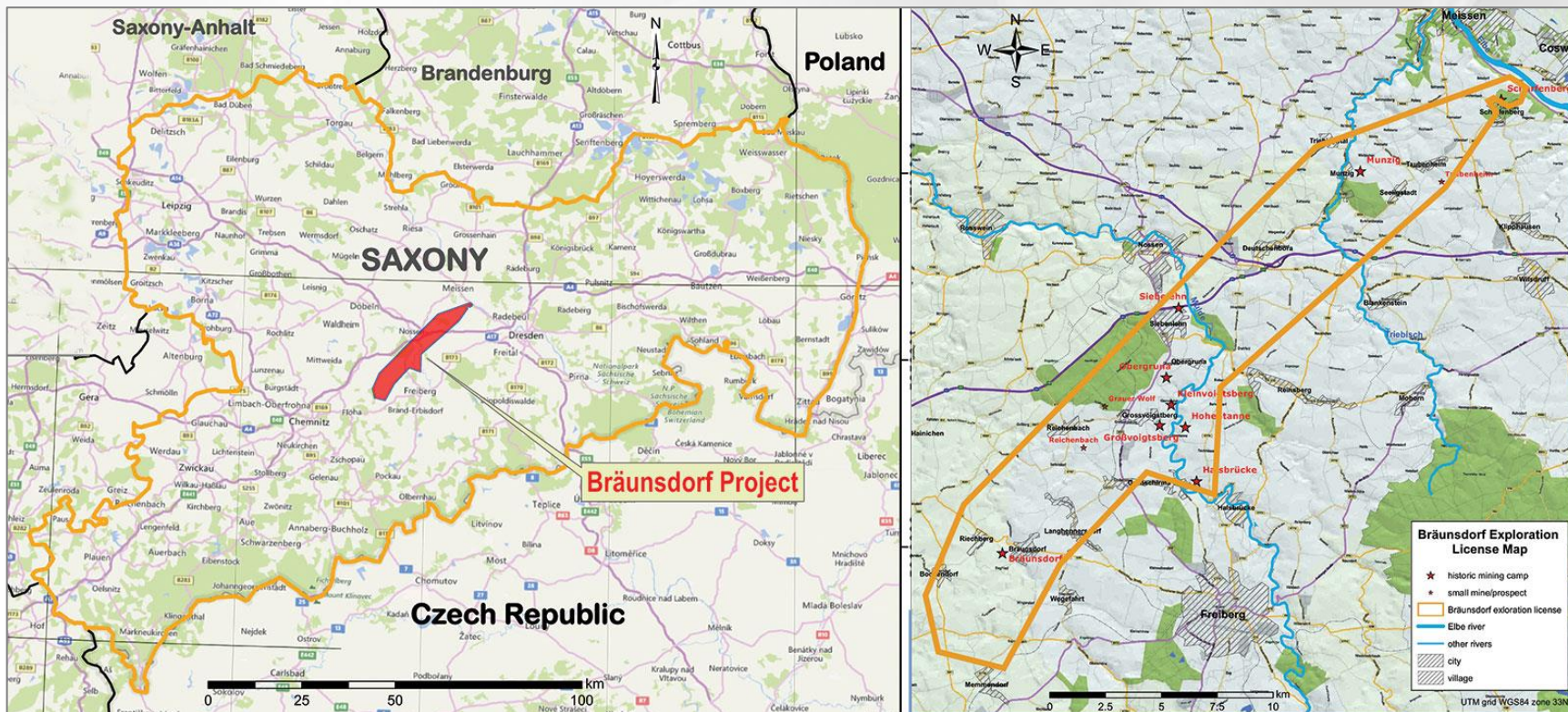
Resource Category	Tonnage (t)	Magnesite (%)	Talc (%)
Indicated	12,728,000	52.1	35.4
Inferred	18,778,000	53.1	31.7

NI 43-101 resources

- Open-pittable deposit
- Simple separation metallurgy
- No environmental negatives (Arsenic, asbestos, etc.)
- High quality (brightness) talc targeting highest value market niches – Plastics, cosmetics, etc.
- Near Timmins, Ontario (Skilled labour, transport, energy, etc)
- Saleable secondary product – MgO
- Targeting Wallboard Market among others
- Long mine life (+100 years)
- Mining Lease in place

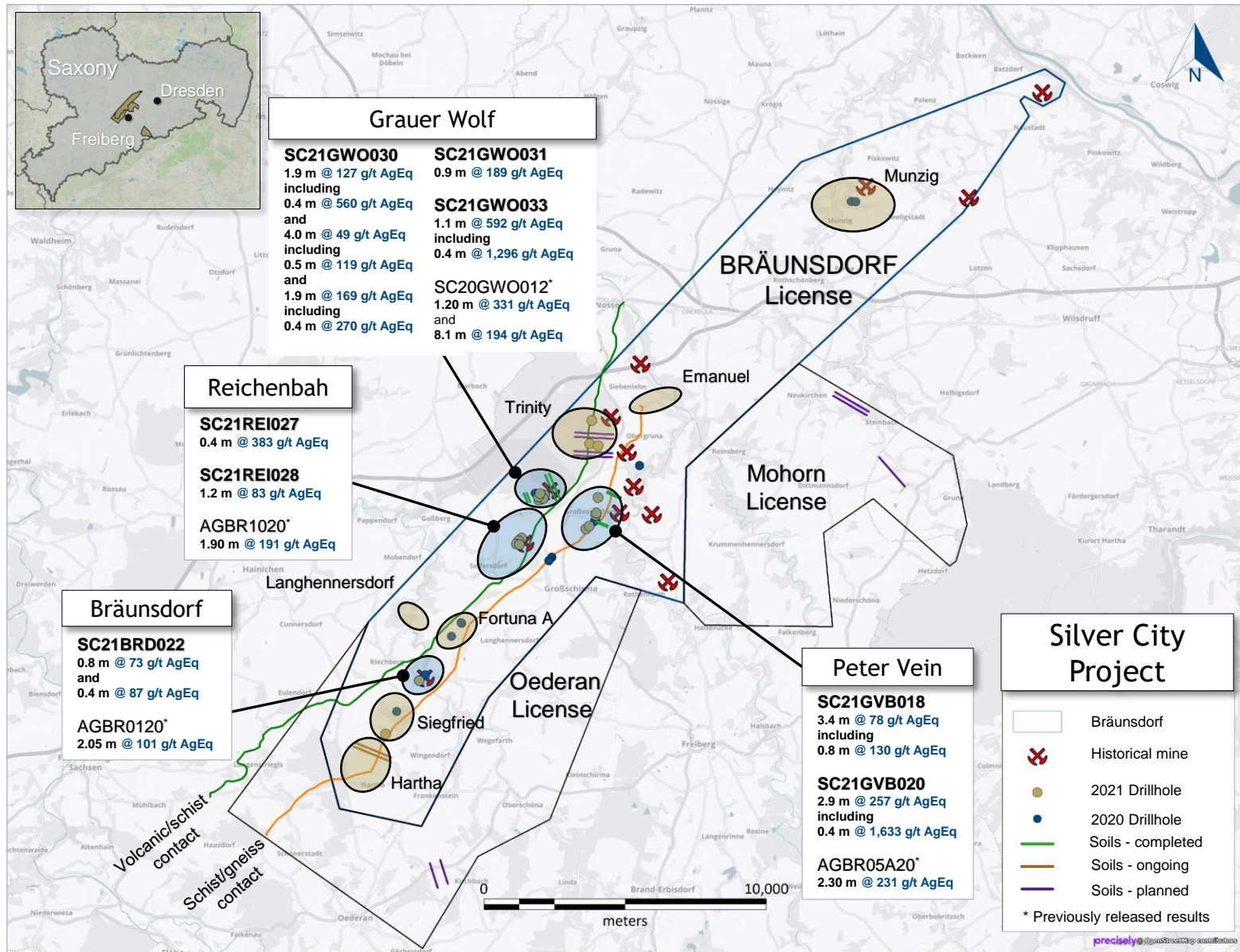
# Bräunsdorf Silver Project, Germany

3% GMR on Silver and Gold, 2.5% GMR on all other metals



Approximately US \$500,000,000 of historic SILVER production  
750 Years of Intermittent Production  
No Modern Exploration

# Bräunsdorf Silver Project - Mineralization



# Unique Investment Opportunity



Principal Exploration Office

## Focus On The Value

- **FEW SHARES** outstanding and history of minimal stock dilution
- **EXPERIENCED**, fiscally prudent management
- **INCOME** from Royalties and Options
- **WE OWN** our property interests and exploration assets (offices, core facility, vehicles, core library, etc.)
- **NO DEBT**, funds available for exploration
- **LOW** Political Risk
  - Based in North America – QC, ON, NS, NB, AZ, Nev., Wash. and Saxony Germany
- **SPECIALIZED**, Experienced Board of Directors
  - 3 senior geologists
  - 1 mining accountant
  - 1 senior finance professional





# **GLOBEX**

**Mining Enterprises Inc.**



**Thank You**

**Danke**

**Merci**

**Meegwetch**

[www.globexmining.com](http://www.globexmining.com)