



June 2023

TSX **TSX. V. : KS**
FSE: K1SN



KLONDIKE SILVER CORP.

Southeast British Columbia

CAUTIONARY NOTES REGARDING FORWARD LOOKING STATEMENTS

This presentation does not constitute an offer to sell or solicitation of an offer to buy securities of Klondike Silver Corp. Mr. Locke Goldsmith, P. GEO, P.Eng., a Qualified Person as defined by National Instrument 43-101, has read and approved the disclosure of the technical data herein.

FORWARD LOOKING STATEMENTS

This presentation contains "forward-looking statements". These forward-looking statements are made as of the date of this presentation and Klondike Silver Corp. does not intend, and does not assume any obligation to update these forward-looking statements.

Forward-looking statements include, but are not limited to statements with respect to the timing and amount of estimated future exploration, success of exploration activities, expenditures, permitting, and requirements for additional capital and access to data.

Forward-looking statements involve known and unknown risks, uncertainties and other factors which may cause the actual results, performance or achievements of the company to be materially different from any future results, performance, achievements expressed or implied by the forward-looking statements. Such factors include, among others, risks related to actual results of current exploration activities; changes in project parameters as plans continue to be refined; the ability to enter into joint ventures or to acquire or dispose of property interests; future prices of mineral resources; accidents, labor disputes and other risks of the mining industry; ability to obtain financing; and delays in obtaining governmental approvals.





MISSION STATEMENT

Clondike Silver Corp. is re-activating the Slocan Mining Camp, one of the oldest in British Columbia (1891).

Clondike Silver Corp. controls one of the largest mineral claim packages in the Camp, for the first time in the Camp's history. The claims encompasses 65 of the 173 past producing mines which produced a combined 1.3 Million kg of Silver, 72 Million kg of Zinc and 159 Million kg of Lead.

OPPORTUNITY

Having successfully re-discovered the western extension of the high-grade silver/zinc/lead “Main Vein” by underground drifting and diamond drilling, Klondike Silver Corp. now can continue exploring the unexplored 1.5 km section of the “Main Vein”, underneath Silver Ridge, to the western boundary of their claims.

Successfully delineating potential mineral resources will re-activate the 100 ton per day mill in Sandon. As operational revenue permits, the other 65 past producing mines as well as undiscovered deposits will be explored using the latest technology available.



WHY INVEST IN KLONDIKE SILVER CORP. ?

The largest mineral claim block in the Slocan Mining Camp:

- First time in the Camp's history, 100 % owned, no royalties.
- 65 past producers.
- At least 5 major high-grade silver/zinc/lead veins on the claims.
- Numerous smaller high-grade silver/zinc/lead veins on the claims.
- High potential to discover new deposits.

Active mine permit (M-65):

- No long-term permitting procedure required (i.e. short timeline to production).
- Permitted underground workings and mill facilities.

Developed Infrastructure:

- Brownfields area.
- 100 ton per day mill and tailings ponds.
- 140 km north of Teck's Lead/Zinc smelter.

Highly-experienced management and workforce

INITIAL EXPLORATION FOCUS

Main Vein

- The largest and most prolific vein structure in the Slocan Mining Camp. Most of the largest producing mines are located along this structure.

Combined Past Production of the Main Vein:

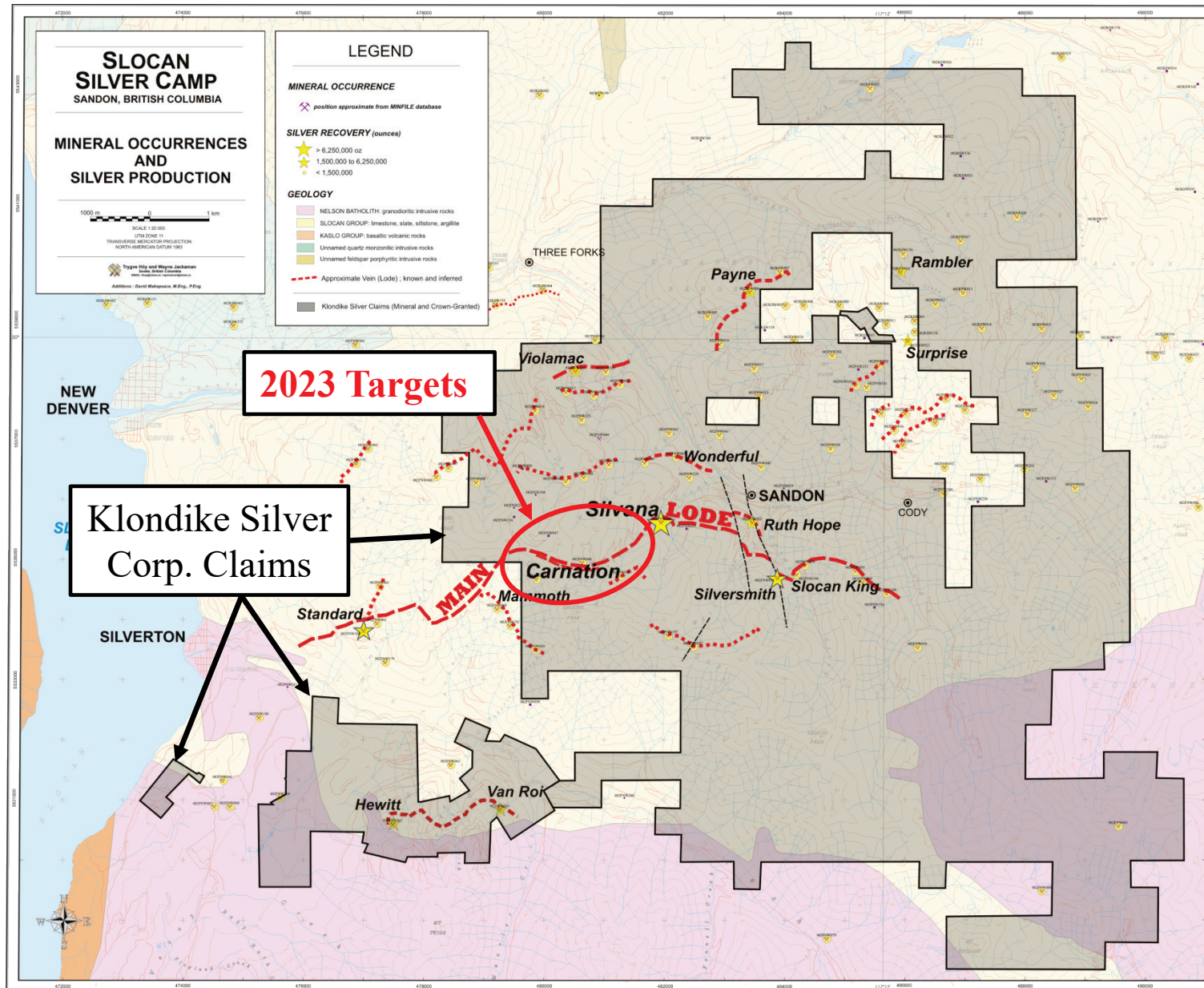
- Silver: 886,000 kg / 28 Million oz
- Zinc: 95 Million kg / 209 Million lbs
- Lead: 117 Million kg / 258 Million lbs

Target:

- Between the Silvana Mine and the Mammoth Mine including the Carnation Mine, a total distance 1.5 km.

Access:

- Silvana Mine 4625 Level workings (1,524 m).



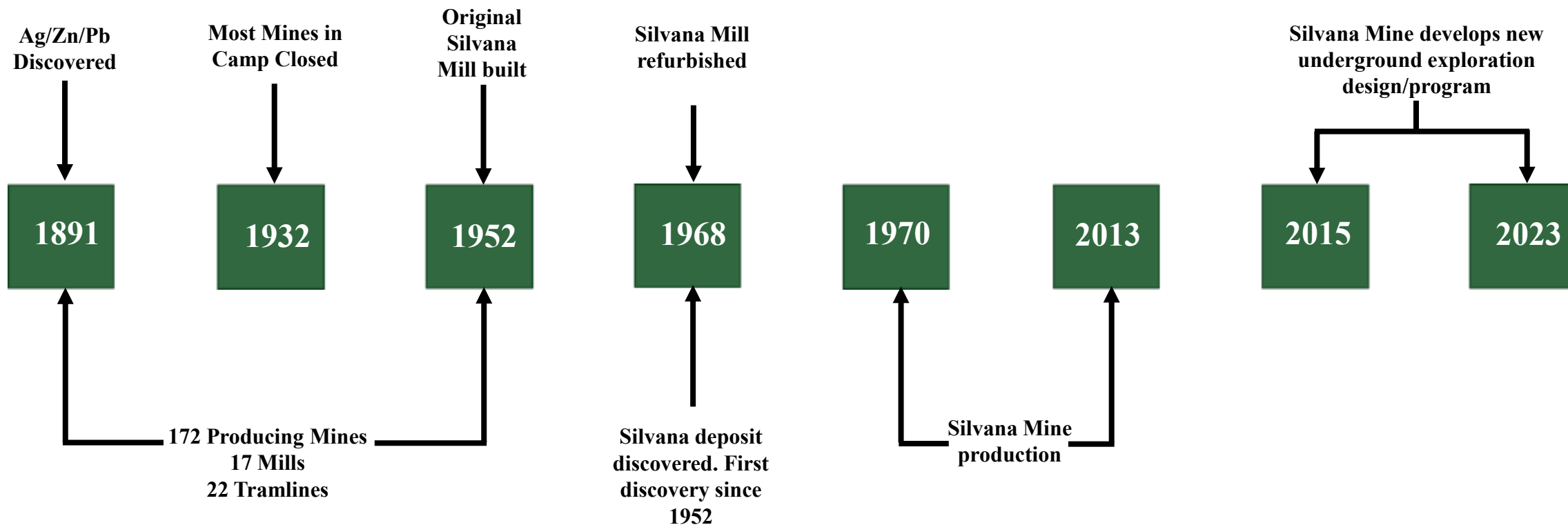
2019 – 2020 UNDER GROUND EXPLORATION PROGRAM

- **Drilled an array of 10 diamond drill holes from 4625 West Lateral Drift Diamond Drill Station # 1 (1,212 m / 3,977 ft).**
- **Visible Galena (PbS) and Sphalerite (ZnS) in the diamond drill core of every hole.**
- **Main vein structure intersected in each diamond drill hole.**
- **Good correlation of breccia zones, mineralization and faults between diamond drill holes.**
- **Initiate drifting towards 4625 West Lateral Drift Diamond Drill Station # 2.**
- **Exploration drifting shutdown April 2020 due to COVID-19.**

2021 – 2023 UNDER GROUND EXPLORATION PROGRAM

- **Continued drifting towards 4625 West Lateral Drift Diamond Drill Station # 2.**
- **Establish 4625 West Lateral Drift Diamond Drill Station # 2 and stub.**
- **Initiate an array of 11 diamond drill holes from 4625 West Lateral Drift Diamond Drill Station # 2 (1,350 m / 4,429 ft.).**
- **Now drilling north from the same station towards downward projections of the Carnation Hangingwall and Footwall Lodes.**

EXPLORATION & DEVELOPMENT TIMELINE



THE PROPERTY

The Silvana Mine has operated for 40 years as the only operating mine in the Slocan Mining Camp, one of the oldest mining camps in British Columbia. The mine consists of a tracked and trackless underground mine, a 100 ton per day mill and three side-valley tailings ponds.

Historical Production over 40 years:

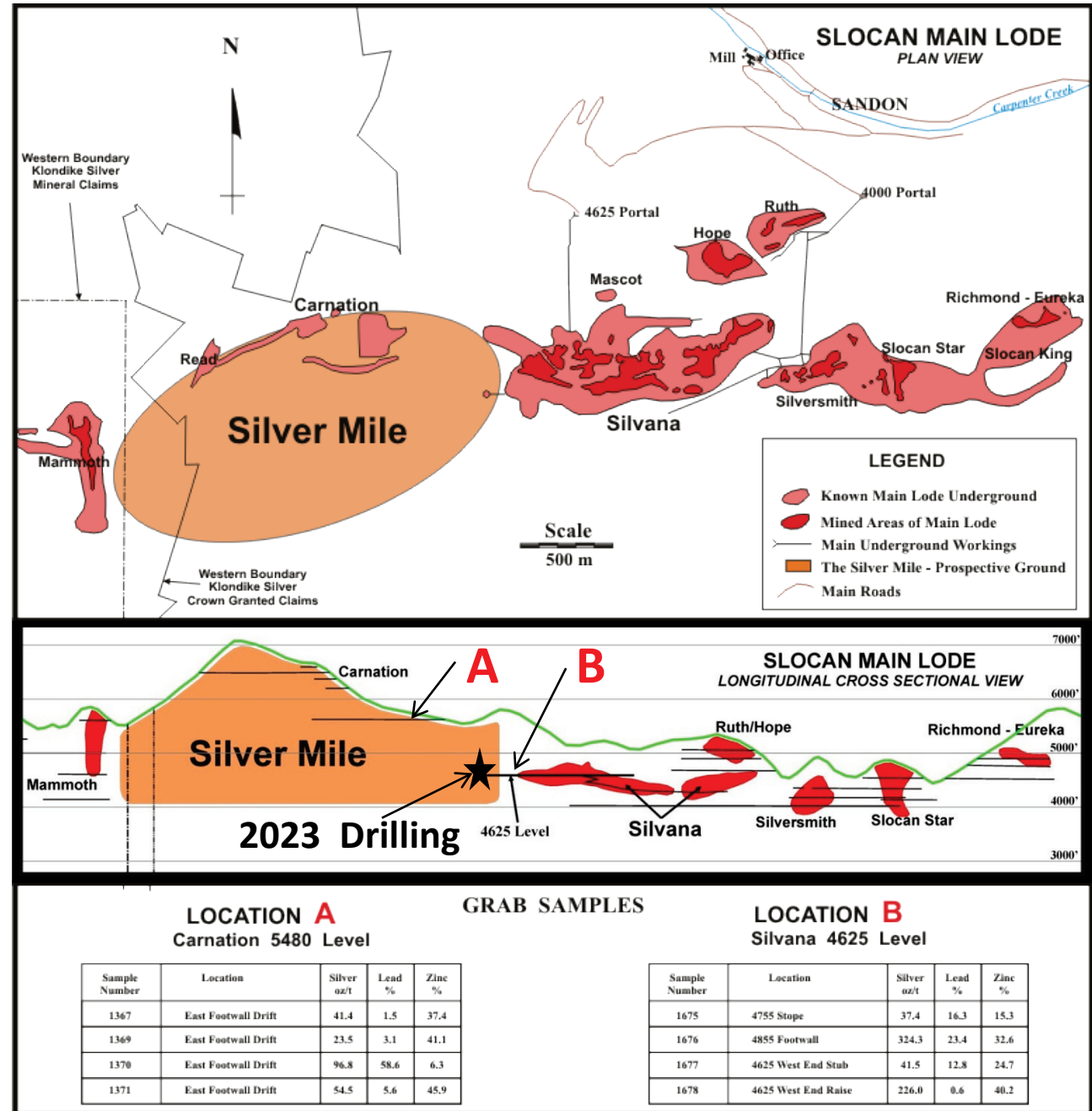
- Silver: 243,000 kg / 7.8 Million oz
- Zinc: 26 Million kg / 58 Million lbs
- Lead: 29 Million kg / 63 Million lbs

Historical Grade over 40 years:

- Silver: 476 g/t / 13.9 oz/t
- Zinc: 5.2 %
- Lead: 5.6 %

Target (Silver Mile):

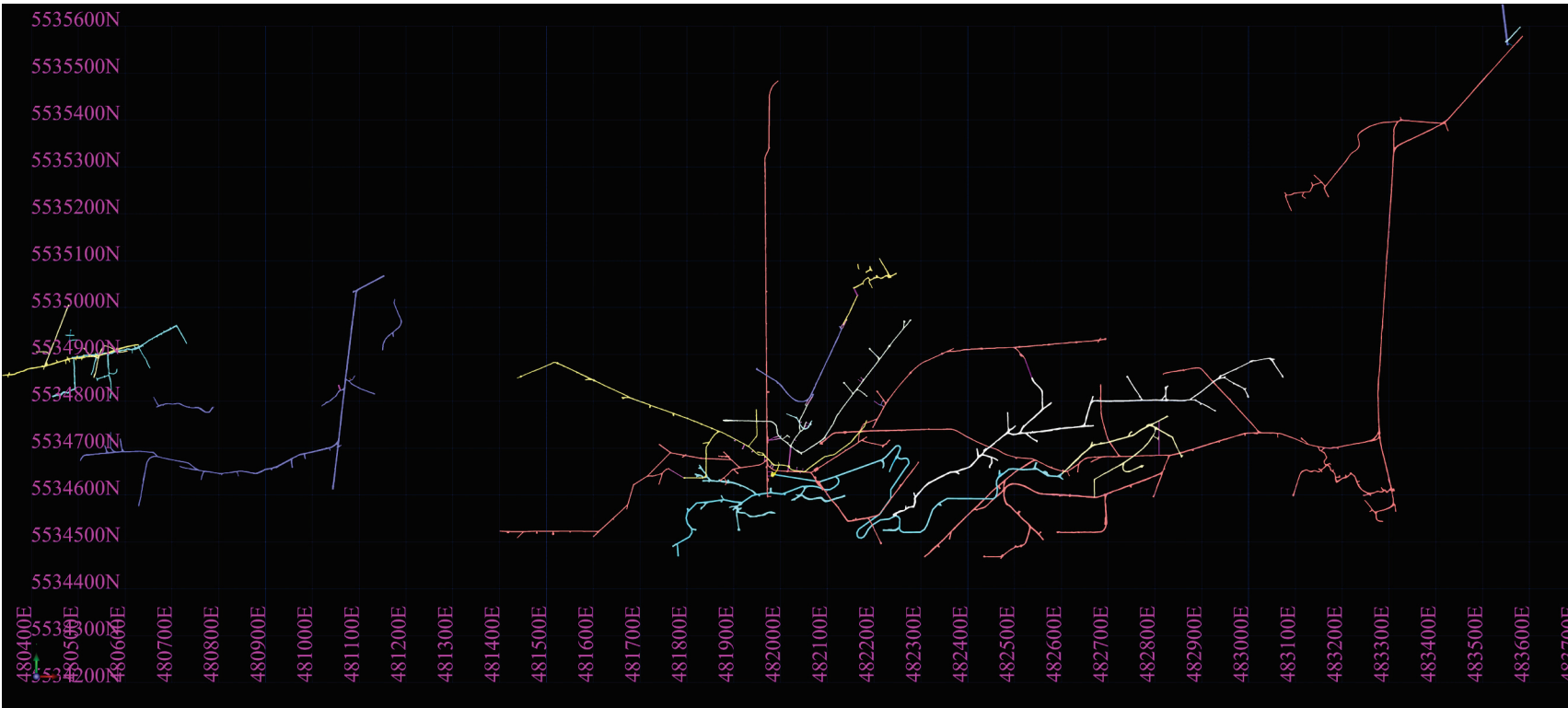
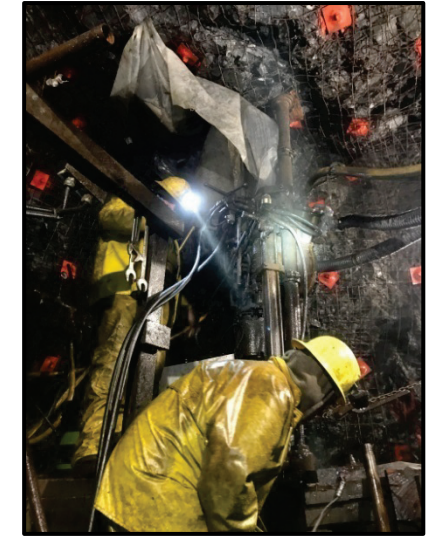
Below the historic Read and Carnation mine workings



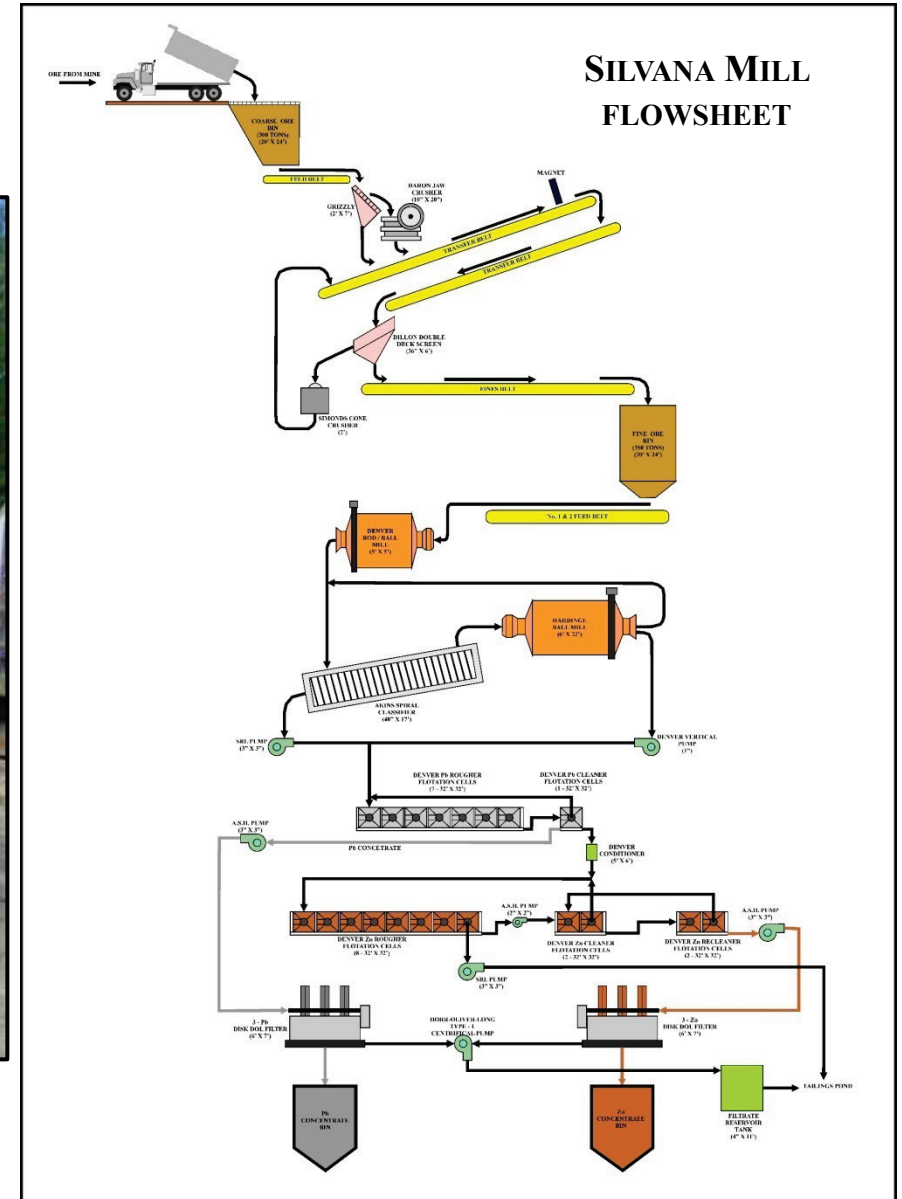
WHAT DID KLONDIKE SILVER ACQUIRE ?

- Fully operational underground mine.
- On site mill.
- All necessary mine and mill equipment.
- Fully developed infrastructure (Brownfields).
- An active mine permit.
- Approximately 114 square km of mineral claims in the Slocan Mining Camp.
- All claims are 100% royalty free.
- 65 past producing mines which have the potential to discover additional mineral resources.
- At least 5 major and numerous minor vein structures which have the potential to discover new mineral resources.

FULLY OPERATIONAL UNDERGROUND MINE



ON SITE MILL



FULLY DEVELOPED INFRASTRUCTURE



HIGHLY-EXPERIENCED LEADERSHIP

Thomas Kennedy, President CEO - B.Comm., J.D., is a graduate of the University of British Columbia. After an initial career at the Federal Department of Justice, Mr. Kennedy has primarily focused as a legal, financial and business consultant to publicly traded companies. Mr. Kennedy is currently a member of the Law Society of British Columbia, the Canadian Bar Association, the British Columbia Bar Association, and an Associate member of the American Bar Association. Mr. Kennedy is an officer and/or director of several TSX-V publicly traded companies.

Andrew H. Rees - Mr. Rees has over multiple years experience working with oil & gas and mining companies having raised over \$100 million in the public markets. He has been involved in an executive management role taking projects from discovery to commercial production. Mr. Rees obtained a Bachelor of Commerce from Royal Roads University (British Columbia).

Glen Harder - Mr. Harder has been a member of the British Columbia Law Society since 1986 and is a senior securities lawyer, with a primary focus on natural resources law. He is the principal of Harder & Company, a Vancouver law firm.

KLONDIKE SILVER CORP. SUMMARY

**114 km²
of the
Slocan Mining
Camp**

**65
Past
Producing
Mines**

**1.5 km
Section of
Unexplored
Main Vein**

**Historical
Mine Grade
476 g/t Ag**

**Mine &
On Site Mill**

**Fully
Developed
Infrastructure**

**Highly-
Experienced
Leadership**

**Our Vision
Silver Zinc
Lead
Production**

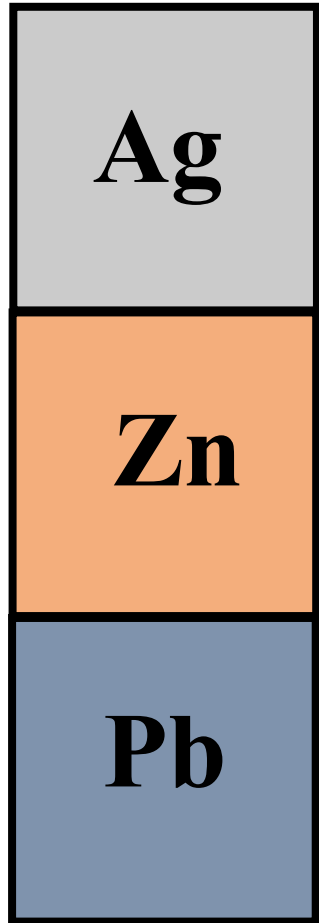


TSX.V. : KS

FSE: K1SN

Shares Issued:
262,959,035

Market Cap.:
7.9 Million



KLONDIKE SILVER CORP.

JUNE 2023

TOM KENNEDY – PRESIDENT & CEO
+1 (604) 682-2928

**Head Office – Suite 804, 750 West Pender Street,
Vancouver, BC, V6C 2T7 Canada**

www.klondikesilver.com